



Raising the standards

COMPRESSED AIR TREATMENT • TRATTAMENTO ARIA COMPRESSA
MAY 2026 PRICE LIST • LISTINO PREZZI MAGGIO 2026



Index

Refrigeration dryers	2
Dolomite dryers - DD series	2
Easy dry dryers - ED series	2
Energy saving dryers - ESD series	4
High temperature dryers - HTD series	5
High pressure dryers - ED HP series	5
Regenerative refrigerant dryers - SFD series	6
Desiccant dryers	6
Heatless desiccant dryers - KMD series	6
Heatless desiccant dryers - HL series	7
Heatless desiccant dryers - HLA series	7
Heatless desiccant dryers - HLA Pro series	7
Heated blower desiccant dryers - HB series	10
Nitrogen generators	11
Oxygen generators	13
Aftercoolers	15
Air to air aftercoolers - RA series	15
Water to air aftercoolers - A / AV series	16
Compressed air treatment	17
Standard filters - F series	17
Cyclone condensate separators - SA / SRA series	19
Alps filters - AF series	20
Alps condensate separators - SA-AF series	21
High pressure filters - F-HP series	21
High temperature filters - AF-HT / F-HD series	22
Sterile filters - SF_BS series	23
Activated carbon towers - ACT series	23
Water/oil separators - Ecoplus series	24
Condensate drains	25
Energy savers - ESV series	26
Bypass	26
Compressed air piping system - EPL series	27

Indice

Essiccatori a refrigerazione	2
Essiccatori Dolomite - Serie DD	2
Essiccarori Easy Dry - Serie ED	2
Essiccatori a risparmio energetico - Serie ESD	4
Essiccatori per alte temperature - Serie HTD	5
Essiccatori per alta pressione - Serie ED HP	5
Essiccatori a refrigerazione rigenerativi - Serie SFD	6
Essiccatori ad adsorbimento	6
Con rigenerazione a freddo - Serie KMD	6
Con rigenerazione a freddo - Serie HL	7
Con rigenerazione a freddo - Serie HLA	7
Con rigenerazione a freddo - Serie HLA Pro	7
Con rigenerazione a caldo - Serie HB	10
Generatori di azoto	11
Generatori di ossigeno	13
Raffreddatori finali	15
Ad aria - Serie RA	15
Ad acqua - Serie A / AV	16
Trattamenti per aria compressa	17
Filtri standard - Serie F	17
Separatori di condensa ciclonici - Serie SA / SRA	19
Filtri Alps - Serie AF	20
Separatori di condensa Alps - Serie SA-AF	21
Filtri per alta pressione - Serie F-HP	21
Filtri per alte temperature - Serie AF-HT / F-HD	22
Filtri sterili - Serie SF_BS	23
Colonne a carbone attivo - Serie ACT	23
Separatori acqua/olio - Serie Ecoplus	24
Scaricatori di condensa	25
Energy saver - Serie ESV	26
Bypass	26
Linea trasporto aria compressa - Serie EPL	27

IMPORTANT NOTICE:

All prices listed as Options are intended to be added or subtracted to the Standard price of the product.

For special configurations not listed in this price list, please contact our sales department.

AVVISO IMPORTANTE:

Tutti i prezzi indicati come Optional sono da aggiungere o sottrarre al prezzo Standard del prodotto.

Per configurazioni speciali non elencate nel presente listino, vi preghiamo di rivolgervi al nostro ufficio commerciale.

Dolomite Dryers - DD Series

Dolomite series refrigeration dryers / Essiccatori a refrigerazione serie Dolomite

Model	Air flow			Fittings	Code	Price
	l/min	m ³ /h	CFM	BSP	Standard	
DD 36	600	36	21	3/8"	08F.0036CG0.00B0	€ 1.200,00
DD 54	900	54	32	1/2"	08F.0054CG0.00B0	€ 1.300,00
DD 72	1.200	72	42	1/2"	08F.0072CG0.00B0	€ 1.400,00
DD 108	1.800	108	64	1/2"	08F.0108CG0.00B0	€ 1.600,00
DD 144	2.400	144	85	3/4"	08F.0144CG0.00B0	€ 1.800,00
DD 180	3.000	180	106	3/4"	08F.0180CG0.00B0	€ 2.300,00
DD 216	3.600	216	127	3/4"	08F.0216CG0.00B0	€ 2.400,00
DD 280	4.666	280	165	1"	08F.0280BG0.00B0	€ 3.400,00
DD 340	5.666	340	200	1"	08F.0340BG0.00B0	€ 4.000,00
DD 500	8.333	500	294	1 1/2"	08F.0500AG0.00B0	€ 4.700,00
DD 610	10.166	610	359	1 1/2"	08F.0610AG0.00B0	€ 6.300,00
DD 750	12.500	750	441	2"	08F.0750G0.00B0	€ 7.600,00
DD 1000	16.666	1.000	589	2 1/2"	08F.1000G0.00B0	€ 9.300,00
DD 1300	21.666	1.300	765	2 1/2"	08F.1300G0.00B0	€ 11.600,00

Options	
OPT NL	OPT 60H
No loss	60 Hz
+ € 124,00	STD
+ € 124,00	STD
+ € 124,00	STD
+ € 124,00	STD
+ € 124,00	STD
+ € 124,00	STD
+ € 124,00	STD
+ € 124,00	+ € 179,00
+ € 124,00	+ € 206,00
+ € 209,00	+ € 240,00
+ € 209,00	+ € 322,00
+ € 209,00	+ € 389,00
+ € 209,00	+ € 476,00
+ € 215,00	+ € 595,00



Model	Standard Voltage Volt/Ph/Hz	Refrigerant	Max pressure bar
DD 36 - 216	230/1/50-60	R513A	16
DD 280 - 610	230/1/50	R407C	14
DD 750 - 1000			
DD 1300	400/3/50		

	Model	Air flow	Fittings	Code	Standard	Price	Standard Voltage	Refrigerant	Max pressure	Options
EN	Model	Air flow	Fittings	Code	Standard	Price	Standard voltage	Refrigerant	Max pressure	Options
IT	Modello	Portata	Connessioni	Codice	Standard	Prezzo	Voltaggio standard	Refrigerante	Pressione massima	Optionals

	OPT 60H	OPT NL	AOR	N/A
EN	Voltage: DD36-1000 - 230V/1Ph/60Hz; DD1300 - 460V/3Ph/60Hz	With "No loss" drain	Available On Request	Not available
IT	Voltaggio: DD36-1000 - 230V/1Ph/60Hz; DD1300 - 460V/3Ph/60Hz	Con scaricatore "No loss"	Disponibile su richiesta	Non disponibile

Easy Dryers - ED Series

Easy Dry series refrigeration dryers
Essiccatori a refrigerazione serie Easy dry



Model	Air flow			Fittings	Code	Price	Options								
	l/min	m ³ /h	CFM	BSP	Standard		OPT NL	OPT 60H	OPT 46V	OPT 15V	OPT 38V	OPT NPT	OPT W	OPT SW	OPT 25B
ED 18	300	18	11	3/8"	08L.0018BG0.00B0	€ 1.300,00	+ € 244,00	+ € 149,00	N/A	+ € 149,00	N/A	+ € 74,00	N/A	N/A	+ € 685,00
ED 24	400	24	14	3/8"	08L.0024BG0.00B0	€ 1.400,00	+ € 244,00	+ € 151,00	N/A	+ € 151,00	N/A	+ € 76,00	N/A	N/A	+ € 699,00
ED 54	900	54	32	1/2"	08L.0054BG0.00B0	€ 1.600,00	+ € 244,00	+ € 163,00	N/A	+ € 163,00	N/A	+ € 83,00	N/A	N/A	+ € 755,00
ED 72	1200	72	42	1/2"	08L.0072BG0.00B0	€ 1.800,00	+ € 247,00	+ € 196,00	N/A	+ € 196,00	N/A	+ € 96,00	N/A	N/A	+ € 746,00
ED 108	1800	108	64	3/4"	08L.0108BG0.00B0	€ 2.100,00	+ € 247,00	+ € 215,00	N/A	+ € 215,00	N/A	+ € 111,00	N/A	N/A	+ € 716,00
ED 144	2400	144	85	3/4"	08L.0144BG0.00B0	€ 2.400,00	+ € 247,00	+ € 236,00	N/A	+ € 236,00	N/A	+ € 118,00	N/A	N/A	+ € 756,00
ED 180	3000	180	106	3/4"	08L.0180BG0.00B0	€ 2.800,00	+ € 247,00	+ € 289,00	N/A	+ € 289,00	N/A	+ € 146,00	N/A	N/A	+ € 1.502,00
ED 225	3750	225	132	1"	08L.0225DG0.00B0	€ 3.300,00	+ € 253,00	+ € 365,00	N/A	N/A	N/A	+ € 183,00	N/A	N/A	N/A
ED 260	4333	260	153	1"	08L.0260DG0.00B0	€ 3.900,00	+ € 253,00	+ € 396,00	N/A	N/A	N/A	+ € 199,00	N/A	N/A	N/A
ED 300	5000	300	177	1 1/2"	08L.0300DG0.00B0	€ 4.300,00	+ € 253,00	+ € 434,00	N/A	N/A	N/A	+ € 219,00	N/A	N/A	N/A
ED 360	6000	360	212	1 1/2"	08L.0360DG0.00B0	€ 5.100,00	+ € 253,00	+ € 521,00	N/A	N/A	N/A	+ € 259,00	N/A	N/A	N/A
ED 480	8000	480	282	1 1/2"	08L.0480DG0.00B0	€ 6.800,00	+ € 253,00	+ € 669,00	N/A	N/A	N/A	+ € 338,00	N/A	N/A	N/A
ED 600	10000	600	353	2"	08L.0600DG0.00B1	€ 8.400,00	STD*	+ € 857,00	N/A	N/A	N/A	+ € 428,00	+ € 2.717,00	+ € 6.012,00	N/A
ED 780	13000	780	459	2"	08L.0780DG0.00B1	€ 10.500,00	STD*	N/A	+ € 1.011,00	N/A	+ € 1.534,00	+ € 507,00	+ € 2.717,00	+ € 6.012,00	N/A
ED 1000	16667	1000	588	2"	08L.1000DG0.00B1	€ 12.100,00	STD*	N/A	+ € 1.195,00	N/A	+ € 1.810,00	+ € 599,00	+ € 2.717,00	+ € 6.012,00	N/A

Easy Dryers - ED Series

Easy Dry series refrigeration dryers / Essiccatori a refrigerazione serie Easy dry

Model	Air flow			Fittings	Code	Price	Options						
	l/min	m³/h	CFM	BSP	Standard		OPT NL	OPT 46V	OPT 38V	OPT W	OPT SW	OPT NPT	OPT ANS
							No loss	460/3/60	380/3/60	Water	Sea Water	NPT + AWG	ANSI + AWG
ED 1300	21.667	1.300	765	3"	08L.1300DG0.00BG	€ 15.200,00	STD*	+ € 1.506,00	+ € 2.283,00	+ € 1.505,00	+ € 6.848,00	+ € 755,00	N/A
ED 1500	25.000	1.500	882	3"	08L.1500DG0.00BG	€ 17.500,00	STD*	+ € 1.738,00	+ € 2.635,00	+ € 1.738,00	+ € 7.902,00	+ € 868,00	N/A
ED 1800	30.000	1.800	1.059	3"	08L.1800DG0.00BG	€ 19.000,00	STD*	+ € 1.881,00	+ € 2.851,00	+ € 1.881,00	+ € 8.553,00	+ € 941,00	N/A
ED 2250	37.500	2.250	1.324	3"	08L.2250DG0.00BG	€ 20.600,00	STD*	+ € 2.041,00	+ € 3.092,00	+ € 2.041,00	+ € 9.278,00	+ € 1.019,00	N/A
ED 2600	43.333	2.600	1.530	3"	08L.2600DG0.00BG	€ 26.300,00	STD*	+ € 2.356,00	+ € 3.949,00	+ € 2.356,00	+ € 11.849,00	+ € 1.095,00	N/A
ED 3200	53.333	3.200	1.880	DN 150	08L.3200DG0.00BG	€ 31.700,00	STD*	+ € 3.216,00	+ € 4.730,00	+ € 2.871,00	+ € 9.462,00	N/A	+ € 1.608,00
ED 4200	70.000	4.200	2.472	DN 150	08L.4200DG0.00BG	€ 38.100,00	STD*	+ € 3.858,00	+ € 5.677,00	+ € 3.445,00	+ € 11.355,00	N/A	+ € 1.930,00
ED 4800	80.000	4.800	2.825	DN 150	08L.4800DG0.00BG	€ 42.000,00	STD*	+ € 4.134,00	+ € 6.082,00	+ € 3.790,00	+ € 12.166,00	N/A	+ € 2.067,00
ED 5300	88.333	5.300	3.118	DN 150	08L.5300DG0.00BG	€ 46.300,00	STD*	+ € 4.824,00	+ € 7.308,00	+ € 2.321,00	+ € 14.617,00	N/A	+ € 2.411,00
ED 6000	100.000	6.000	3.529	DN 150	08L.6000DG0.00BG	€ 51.800,00	STD*	+ € 5.805,00	+ € 8.796,00	+ € 2.855,00	+ € 17.595,00	N/A	+ € 2.902,00
ED 8800	146.667	8.800	5.176	DN 200	08L.8800DG0.00BG	€ 66.400,00	STD*	+ € 7.249,00	+ € 10.986,00	+ € 7.250,00	+ € 21.973,00	N/A	+ € 3.626,00
ED 10000	166.667	10.000	5.882	DN 200	08L.A100DG0.00BG	€ 73.800,00	STD*	+ € 7.909,00	N/A	+ € 7.907,00	+ € 23.972,00	N/A	+ € 3.954,00
ED 12000	200.000	12.000	7.059	DN 200	08L.A120DG0.00BG	€ 88.300,00	STD*	+ € 8.702,00	N/A	+ € 8.697,00	+ € 26.370,00	N/A	+ € 4.353,00
ED 17600	293.334	17.600	10.353	2 x DN 200	08L.A176DG0.00BG	€ 127.300,00	STD*	+ € 12.607,00	N/A	+ € 12.606,00	+ € 38.215,00	N/A	+ € 6.305,00
ED 20000	333.334	20.000	11.765	2 x DN 200	08L.A200DG0.00BG	€ 138.900,00	STD*	+ € 13.753,00	N/A	+ € 13.753,00	+ € 41.689,00	N/A	+ € 6.874,00
ED 24000	400.000	24.000	14.118	2 x DN 200	08L.A240DG0.00BG	€ 166.800,00	STD*	+ € 16.517,00	N/A	+ € 16.516,00	+ € 50.067,00	N/A	+ € 8.260,00

Model	Standard Voltage Volt/Ph/Hz	Refrigerant	Max pressure bar
ED 18 - 600	230/1/50	R513A	16
ED 780 - 1000	400/3/50		13

Model	Standard Voltage Volt/Ph/Hz	Refrigerant	Max pressure bar
ED 1300 - 4800	400/3/50	R513A	14
ED 5300 - 24000			13

	Standard / STD	Price	Standard Voltage	Refrigerant	Max pressure	Options	N/A
EN	Standard	Price	Standard voltage	Refrigerant	Max pressure	Options	Not available
IT	Standard	Prezzo	Voltaggio standard	Refrigerante	Pressione massima	Optional	Non disponibile

	OPT NL	OPT 60H	OPT 46V	OPT 38V	OPT 15V
EN	With "No loss" drain	Voltage: 230/1/60	Voltage: 460/3/60	Voltage: 380/3/60	Voltage: 115/1/60
IT	Con scaricatore "No loss"	Voltaggio: 230/1/60	Voltaggio: 460/3/60	Voltaggio: 380/3/60	Voltaggio: 115/1/60

	OPT NPT	OPT ANS	AOR	OPT W
EN	NPT connections + AWG cables	ANSI connections + AWG cables	Available On Request	Water cooled
IT	Connessioni NPT + Cablaggio AWG	Connessioni ANSI + Cablaggio AWG	Disponibile su richiesta	Raffreddamento ad acqua

	OPT SW	OPT 25B	STD*
EN	Sea Water cooled	Max pressure: 25 bar	Integrated "No loss" drain is standard. Timed drain on request
IT	Raffreddamento ad acqua di mare	Pressione massima: 25 bar	Scaricatore "No loss" integrato standard. Scaricatore temporizzato su richiesta

Energy Saving Dryers - ESD Series

Energy saving refrigeration dryers / Essiccatori a refrigerazione a risparmio energetico

Model	Air flow			Fittings	Code	Price	Options	
	l/min	m³/h	CFM	BSP	Standard		OPT W	OPT SW
							Water	Sea Water
ESD 54	900	54	32	½"	08S.0054AG0.00BG	€ 2.500,00	N/A	N/A
ESD 72	1.200	72	42	½"	08S.0072AG0.00BG	€ 2.800,00	N/A	N/A
ESD 108	1.800	108	64	¾"	08S.0108AG0.00BG	€ 3.100,00	N/A	N/A
ESD 144	2.400	144	85	¾"	08S.0144AG0.00BG	€ 3.200,00	N/A	N/A
ESD 180	3.000	180	106	1"	08S.0180AG0.00BG	€ 3.900,00	N/A	N/A
ESD 240	4.000	240	141	1"	08S.0240BG0.00BG	€ 4.800,00	N/A	N/A
ESD 300	5.000	300	176	1½"	08S.0300BG0.00BG	€ 6.100,00	N/A	N/A
ESD 360	6.000	360	212	1½"	08S.0360BG0.00BG	€ 6.300,00	N/A	N/A
ESD 480	8.000	480	282	1½"	08S.0480BG0.00BG	€ 8.000,00	N/A	N/A
ESD 660	11.000	660	388	2"	08S.0660BG0.00BG	€ 10.000,00	N/A	N/A
ESD 780	13.000	780	459	2"	08S.0780BG0.00BG	€ 11.800,00	N/A	N/A
ESD 1000	16.667	1.000	588	2"	08S.1000BG0.00BG	€ 13.900,00	N/A	N/A
ESD 1500	25.000	1.500	882	3"	08S.1500BG0.00BG	€ 21.900,00	+ € 2.190,00	AOR
ESD 1800	30.000	1.800	1.059	3"	08S.1800BG0.00BG	€ 22.300,00	+ € 2.230,00	AOR
ESD 2250	37.500	2.250	1.324	3"	08S.2250BG0.00BG	€ 25.600,00	+ € 2.560,00	AOR
ESD 2600	43.333	2.600	1.530	3"	08S.2600BG0.00BG	€ 28.500,00	+ € 2.850,00	AOR
ESD 3200	53.333	3.200	1.880	DN 150	08S.3200BG0.00BG	€ 40.300,00	+ € 4.030,00	AOR
ESD 4200	70.000	4.200	2.472	DN 150	08S.4200BG0.00BG	€ 44.600,00	+ € 4.460,00	AOR
ESD 4800	80.000	4.800	2.825	DN 150	08S.4800BG0.00BG	€ 48.000,00	+ € 4.800,00	AOR
ESD 5400	90.000	5.400	3.178	DN 150	08S.5400CG0.00BG	€ 53.000,00	+ € 5.300,00	AOR
ESD 6600	110.000	6.600	3.885	DN 200	08S.6600BG0.00BG	€ 63.000,00	+ € 6.300,00	AOR
ESD 7500	125.000	7.500	4.414	DN 200	08S.7500BG0.00BG	€ 70.000,00	+ € 7.000,00	AOR
ESD 10800	180.000	10.800	6.357	DN 250	08S.A108BG0.00BG	€ 101.000,00	+ € 10.100,00	AOR
ESD 13200	200.000	13.200	7.063	DN 250	08S.A132BG0.00BG	€ 120.000,00	+ € 12.000,00	AOR
ESD 15000	250.000	15.000	8.829	DN 250	08S.A150BG0.00BG	€ 133.000,00	+ € 13.300,00	AOR

Model	Standard Voltage Volt/Ph/Hz	Refrigerant	Max pressure bar
ESD 54 - 180	230/1/50	R513A	16
ESD 240 - 660			13
ESD 780 - 1000	400/3/50		14
ESD 1500 - 2600			14
ESD 3200 - 4800			13
ESD 5400 - 15000			13



	Model	Air flow	Fittings	Code	Standard	Price	Standard Voltage	Max pressure
EN	Model	Air flow	Fittings	Code	Standard	Price	Standard voltage	Max pressure
IT	Modello	Portata	Connessioni	Codice	Standard	Prezzo	Voltaggio standard	Pressione massima

	Options	N/A	OPT W	OPT SW	AOR
EN	Options	Not available	Water cooled	Sea Water cooled	Available On Request
IT	Optionals	Non disponibile	Raffreddamento ad acqua	Raffreddamento ad acqua di mare	Disponibile su richiesta

High Temperature Dryers - HTD Series

High temperature refrigeration dryers

Essiccatori a refrigerazione per alte temperature



Model	Air flow			Fittings	Code	Price
	l/min	m³/h	CFM	BSP	Standard	
HTD 35	583	35	21	½"	08C.0035BG0.00B0	€ 2.783,00
HTD 50	833	50	29	½"	08C.0050BG0.00B0	€ 3.068,00
HTD 70	1.167	70	41	½"	08C.0070BG0.00B0	€ 3.399,00
HTD 102	1.700	102	60	¾"	08C.0102BG0.00B0	€ 4.004,00
HTD 140	2.333	140	82	¾"	08C.0140BG0.00B0	€ 4.437,00
HTD 170	2.833	170	100	¾"	08C.0170BG0.00B0	€ 4.927,00

Options	
OPT 60H	OPT NPT
230/1/60	NPT + AWG
+ € 277,00	+ € 138,00
+ € 300,00	+ € 153,00
+ € 336,00	+ € 169,00
+ € 397,00	+ € 199,00
+ € 441,00	+ € 218,00
+ € 490,00	+ € 244,00

Model	Standard Voltage Volt/Ph/Hz	Refrigerant	Max pressure bar
HTD 35 - 170	230/1/50	R134a	16

	Model	Air flow	Fittings	Code	Standard	Price	Standard Voltage
EN	Model	Air flow	Fittings	Code	Standard	Price	Standard voltage
IT	Modello	Portata	Connessioni	Codice	Standard	Prezzo	Voltaggio standard

	Refrigerant	Max pressure	Options	OPT 60H	OPT NPT	HTD
EN	Refrigerant	Max pressure	Options	Voltage: 230/1/60	NPT connections + AWG cables	High Temperature Dryer
IT	Refrigerante	Pressione massima	Optionals	Voltaggio: 230/1/60	Connessioni NPT + Cablaggio AWG	Essiccatore per alte temperature

High Pressure Dryers - ED HP Series

High pressure refrigeration dryers

Essiccatori a refrigerazione per alte pressioni



Model	Air flow			Fittings	Code	Price
	l/min	m³/h	CFM	BSP	Standard	
ED 88 HP	1.470	88	52	¾"	08N.0088BG0	€ 3.579,00
ED 108 HP	1.800	108	64	¾"	08N.0108BG0	€ 3.630,00
ED 180 HP	3.000	180	106	¾"	08N.0180BG0	€ 3.844,00
ED 225 HP	3.750	225	132	¾"	08N.0225BG0	€ 4.155,00
ED 270 HP	4.500	270	159	¾"	08N.0270BG0	€ 4.309,00
ED 360 HP	6.000	360	212	¾"	08N.0360BG0	€ 4.609,00
ED 480 HP	8.000	480	283	1"¾	08N.0480BG0	€ 6.581,00
ED 660 HP	11.000	660	389	1"¾	08N.0660BG0	€ 7.246,00
ED 990 HP	16.500	990	583	1"¾	08N.0990BG0	€ 8.666,00
ED 1200 HP	20.000	1.200	706	1"¾	08N.1200BG0	€ 9.865,00

Options		
OPT 60H	OPT W	OPT SW
230/1/60	Water	Sea Water
STD	N/A	N/A
STD	N/A	N/A
STD	N/A	N/A
STD	N/A	N/A
STD	N/A	N/A
STD	AOR	AOR
+ € 193,00	AOR	AOR
+ € 218,00	AOR	AOR
+ € 269,00	AOR	AOR
+ € 304,00	AOR	AOR

Model	Standard Voltage Volt/Ph/Hz	Refrigerant	Max pressure bar
ED 88 - 360 HP	230/1/50-60	R513A	45
ED 480 - 1200 HP	230/1/50	R407C	45

	Model	Air flow	Fittings	Code	Standard	Price	Standard Voltage	Refrigerant	Max pressure
EN	Model	Air flow	Fittings	Code	Standard	Price	Standard voltage	Refrigerant	Max pressure
IT	Modello	Portata	Connessioni	Codice	Standard	Prezzo	Voltaggio standard	Refrigerante	Pressione massima

	Options	OPT 60H	OPT W	OPT SW	AOR	N/A
EN	Options	Voltage: 230/1/60	Water cooled	Sea Water cooled	Available On Request	Not available
IT	Optionals	Voltaggio: 230/1/60	Raffreddamento ad acqua	Raffreddamento ad acqua di mare	Disponibile su richiesta	Non disponibile

Regenerative refrigerant dryers - SFD Series

Regenerative refrigerant dryers

Essiccatori a refrigerazione rigenerativi



Model	Air flow			Fittings	Code	Price	Options		
	l/min	m³/h	CFM	BSP	Standard		OPT LIT	OPT LAT	OPT IP54
							Low inlet temperature kit	Low ambient temperature kit	IP54 protection
SFD 360	6.000	360	212	1" ½	08K.0360.G0	€ 36.883,00	+ € 10.998,00	+ € 10.998,00	AOR
SFD 420	7.000	420	247	1" ½	08K.0420.G0	€ 41.213,00	+ € 10.998,00	+ € 10.998,00	AOR
SFD 1600	26.667	1.600	942	3"	08K.1600.G0	€ 86.145,00	N/A	N/A	AOR

	Model	Air flow	Fittings	Code	Standard	Price	Standard Voltage	Refrigerant	Max pressure	Options
EN	Model	Air flow	Fittings	Code	Standard	Price	Standard voltage	Refrigerant	Max pressure	Options
IT	Modello	Portata	Connessioni	Codice	Standard	Prezzo	Voltaggio standard	Refrigerante	Pressione massima	Optional

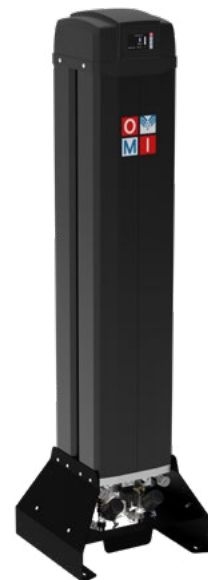
	OPT LIT	OPT LAT	OPT IP54	AOR	N/A
EN	Low inlet temperature kit	Low ambient temperature kit	IP54 electrical protection	Available On Request	Not available
IT	Kit bassa temperatura ingresso	Kit bassa temperatura ambiente	Protezione elettrica IP54	Disponibile su richiesta	Non disponibile

Model	Standard Voltage Volt/Ph/Hz	Refrigerant	Max pressure bar
SFD 360 - 420	400/3/50	R452A	14
SFD 1600			11

Heatless desiccant dryers - KMD Series

Heatless desiccant dryers

Essiccatori ad adsorbimento con rigenerazione a freddo



Model	Air flow			Fittings	Code	Price	Options				
	l/min	m³/h	CFM	BSP	Standard		OPT -70	OPT EMS	OPT 15V	OPT AF	OPT WDC
							DP -70°C	EMS	115/1/60	NPT connections	Seaworthy Wooden cage
KMD5	83	5	2,9	¾"	08U.0005FG.0	€ 1.698,00	+ € 143,00	N/A	+ € 135,00	+ € 85,00	+ € 743,00
KMD15	250	15	8,8	¾"	08U.0015FG.0	€ 1.888,00	+ € 143,00	N/A	+ € 135,00	+ € 93,00	+ € 782,00
KMD25	417	25	14,7	¾"	08U.0025FG.0	€ 2.066,00	+ € 143,00	N/A	+ € 135,00	+ € 111,00	+ € 810,00
KMD40	667	40	23,5	¾"	08U.0040FG.0	€ 4.374,00	+ € 143,00	+ € 3.411,00	+ € 472,00	+ € 201,00	+ € 1.115,00
KMD55	917	55	32,4	¾"	08U.0055FG.0	€ 4.620,00	+ € 143,00	+ € 3.411,00	+ € 487,00	+ € 207,00	+ € 1.148,00
KMD80	1333	80	47,1	¾"	08U.0080FG.0	€ 4.854,00	+ € 143,00	+ € 3.411,00	+ € 487,00	+ € 230,00	+ € 1.189,00
KMD120	2000	120	70,6	1"	08U.0120FG.0	€ 5.333,00	+ € 143,00	+ € 3.411,00	+ € 560,00	+ € 274,00	+ € 1.283,00
KMD160	2667	160	94,2	1"	08U.0160FG.0	€ 5.617,00	+ € 168,00	+ € 3.411,00	+ € 560,00	+ € 284,00	+ € 1.339,00
KMD200	3333	200	117,7	1"½	08U.0200FG.0	€ 9.114,00	+ € 168,00	+ € 3.411,00	+ € 560,00	+ € 423,00	+ € 1.339,00
KMD250	4167	250	147,1	1"½	08U.0250FG.0	€ 9.843,00	+ € 168,00	+ € 3.411,00	+ € 560,00	+ € 439,00	+ € 1.339,00
KMD300	5000	300	176,6	1"½	08U.0300FG.0	€ 9.939,00	+ € 168,00	+ € 3.411,00	+ € 560,00	+ € 466,00	+ € 1.339,00

	Model	Air flow	Fittings	Code	Standard	Price	Standard Voltage	N/A
EN	Model	Air flow	Fittings	Code	Standard	Price	Standard voltage	Not available
IT	Modello	Portata	Connessioni	Codice	Standard	Prezzo	Voltaggio standard	Non disponibile

Model	Standard Voltage Volt/Ph/Hz	Max pressure bar
KMD 5 - 300	230/1/50-60	14

	Options	OPT -70	Air flow*
EN	Options	Dewpoint -70°C	With OPT -70, the higher performances reduce the flowrate to 80% of the standard model nominal flowrate
IT	Optional	Punto di rugiada -70°C	Con l'optional OPT -70, le maggiori prestazioni ridimensionano la portata all'80% della portata nominale dei modelli standard

	Max pressure	OPT EMS	OPT 15V	OPT AF	OPT WDC
EN	Max pressure	Energy Management System (not available with OPT -70)	Voltage: 115/1/60	NPT connections	Seaworthy wooden cage
IT	Pressione massima	Sistema di risparmio energetico (non disponibile con OPT -70)	Voltaggio: 115/1/60	Connessioni NPT	Gabbia in legno per trasporto marittimo

Heatless desiccant dryers - HL / HLA Series

Heatless desiccant dryers / Essiccatori ad adsorbimento con rigenerazione a freddo

Model	Air flow			Air flow (OPT -70)			Fittings	Code	Price
	l/min	m³/h	CFM	l/min	m³/h	CFM	BSP	Standard	
HL 0003	30	1,8	1,1	-	-	-	¼"	08U.0003.G.0	€ 723,00
HL S012	120	7,2	4,2	-	-	-	¼"	08U.S007.G.0	€ 756,00
HL R012	120	7,2	4,2	-	-	-	¼"	08U.R007.G.0	€ 797,00
HL 0030	300	18	10,6	117	7	4	¾"	08U.0018.G.0	€ 1.150,00
HLA 0400	6667	400	235,3	6667	320	188,2	1½"	08U.0400GG.0	€ 15.067,00
HLA 0500	8333	500	294,1	8333	400	235,3	1½"	08U.0500GG.0	€ 16.363,00
HLA 0750	12500	750	441,2	12500	600	352,9	2"	08U.0750GG.0	€ 20.625,00
HLA 0900	15000	900	529,4	15000	720	423,5	2"	08U.0900GG.0	€ 22.068,00
HLA 1200	20000	1200	705,9	20000	960	564,7	2½"	08U.1200GG.0	€ 27.588,00
HLA 1500	25000	1500	882,4	25000	1200	705,9	2½"	08U.1500GG.0	€ 32.047,00
HLA 2000	33333	2000	1176,5	33333	1600	941,2	2½"	08U.2000GG.0	€ 43.937,00

Options				
OPT -70	OPT EMS	OPT 60H	OPT AF	OPT WDC
DP -70°C	EMS	230/l/60	NPT connections	Wooden cage
N/A	N/A	+ € 0,00	+ € 38,00	N/A
N/A	N/A	+ € 0,00	+ € 40,00	N/A
N/A	N/A	+ € 0,00	+ € 41,00	N/A
+ € 343,00	N/A	+ € 0,00	+ € 58,00	N/A
+ € 568,00	+ € 3.459,00	+ € 0,00	+ € 671,00	INC
+ € 564,00	+ € 3.459,00	+ € 0,00	+ € 782,00	+ € 627,00
+ € 822,00	+ € 3.561,00	+ € 0,00	+ € 985,00	+ € 757,00
+ € 737,00	+ € 3.561,00	+ € 0,00	+ € 1.052,00	+ € 789,00
+ € 750,00	+ € 3.561,00	+ € 0,00	+ € 1.316,00	+ € 951,00
+ € 1.091,00	+ € 3.561,00	+ € 0,00	+ € 1.528,00	+ € 1.219,00
+ € 365,00	+ € 3.561,00	+ € 0,00	+ € 2.096,00	+ € 1.294,00

Model	Air flow	Fittings	Code	Standard
EN Model	Air flow	Fittings	Code	Standard
IT Modello	Portata	Connessioni	Codice	Standard

Model	Standard Voltage Volt/Ph/Hz	Max pressure bar
HL / HLA 0003 - 2000	230/1/50	10



Price	Standard Voltage	Max pressure	Options	OPT -70	OPT 60H	OPT AF
EN Price	Standard voltage	Max pressure	Options	Dewpoint -70°C	Voltage: 230/l/60	NPT connections
IT Prezzo	Voltaggio standard	Pressione massima	Optionals	Punto di rugiada -70°C	Voltaggio: 230/l/60	Connessioni NPT

OPT EMS	OPT WDC	N/A	INC	AOR
EN Energy Management System (not available with OPT -70)	Wooden cage	Not available	Included	Available on request
IT Sistema di risparmio energetico (non disponibile con OPT -70)	Gabbia in legno	Non disponibile	Inclusa	Disponibile su richiesta

Heatless desiccant dryers - HLA Pro Series

Heatless desiccant dryers / Essiccatori ad adsorbimento con rigenerazione a freddo

Model	Air flow			Fittings	Code	Price
	l/min	m³/h	CFM	BSP	Standard	
HLA160Pro	2667	160	94	1"	08U.0160EG.0	€ 22.223,00
HLA200Pro	3333	200	118	1"	08U.0200EG.0	€ 22.824,00
HLA275Pro	4590	275	162	1½"	08U.0275EG.0	€ 26.071,00
HLA350Pro	5840	350	206	1½"	08U.0350EG.0	€ 26.178,00
HLA500Pro	8333	500	294	2"	08U.0500EG.0	€ 28.085,00
HLA700Pro	11670	700	412	2"	08U.0700EG.0	€ 31.282,00
HLA900Pro	15000	900	530	2"	08U.0900EG.0	€ 37.458,00
HLA1000Pro	16667	1000	589	2"	08U.1000EG.0	€ 39.359,00
HLA1600Pro	26667	1600	942	3"	08U.1600EG.0	€ 59.682,00
HLA2000Pro	33333	2000	1177	3"	08U.2000EG.0	€ 60.767,00
HLA2500Pro	41660	2500	1471	DN100	08U.2500EG.0	€ 72.936,00
HLA3300Pro	55000	3300	1942	DN100	08U.3300EG.0	€ 83.823,00
HLA4600Pro	76667	4600	2707	DN100	08U.4600EG.0	AOR
HLA5600Pro	93333	5600	3296	DN150	08U.5600EG.0	AOR
HLA6800Pro	113333	6800	4002	DN150	08U.6800EG.0	AOR
HLA8500Pro	141667	8500	5003	DN150	08U.8500EG.0	AOR

Options				
OPT -70	OPT EMS	OPT 70E	OPT AF	OPT 60H
DP -70°C	EMS	DP -70°C + EMS	NPT/ANSI connections	230/l/60
+ € 1.975,00	+ € 3.580,00	+ € 5.554,00	+ € 1.470,00	+ € 2.057,00
+ € 2.016,00	+ € 3.580,00	+ € 5.598,00	+ € 1.695,00	+ € 2.057,00
+ € 1.635,00	+ € 3.580,00	+ € 5.214,00	+ € 1.695,00	+ € 2.057,00
+ € 1.643,00	+ € 3.580,00	+ € 5.224,00	+ € 1.909,00	+ € 2.057,00
+ € 1.867,00	+ € 3.580,00	+ € 5.446,00	+ € 1.909,00	+ € 3.159,00
+ € 1.897,00	+ € 3.686,00	+ € 5.581,00	+ € 2.347,00	+ € 3.252,00
+ € 2.425,00	+ € 3.686,00	+ € 6.111,00	+ € 2.347,00	+ € 3.252,00
+ € 1.981,00	+ € 3.686,00	+ € 5.668,00	+ € 2.347,00	+ € 3.252,00
+ € 3.459,00	+ € 3.686,00	+ € 7.145,00	+ € 2.725,00	+ € 6.574,00
+ € 2.939,00	+ € 3.686,00	+ € 6.626,00	+ € 2.725,00	+ € 6.574,00
+ € 4.313,00	+ € 3.686,00	+ € 7.998,00	+ € 3.021,00	+ € 8.761,00
+ € 4.807,00	+ € 3.686,00	+ € 8.492,00	+ € 3.322,00	+ € 8.761,00
AOR	AOR	AOR	AOR	AOR
AOR	AOR	AOR	AOR	AOR
AOR	AOR	AOR	AOR	AOR
AOR	AOR	AOR	AOR	AOR

Heatless desiccant dryers - HLA Pro Series

Heatless desiccant dryers / Essiccatori ad adsorbimento con rigenerazione a freddo

Model	Options								
	OPT BY	OPT 80	OPT ASU	OPT WDC	OPT SB	OPT GV	OPT LT	OPT LTC	OPT VI
	3 Valves + bypass	80 dB silencer	ASME Design	Wooden cage	Seaworthy packaging	Galvanized vessels	Low temperature kit 1*	Low temperature kit 2*	Tower insulation
HLA160Pro	+ € 2.424,00	+ € 3.661,00	+ € 5.727,00	+ € 4.044,00	+ € 7.709,00	+ € 5.140,00	+ € 16.140,00	+ € 35.220,00	+ € 5.507,00
HLA200Pro	+ € 2.424,00	+ € 3.661,00	+ € 5.727,00	+ € 4.044,00	+ € 7.709,00	+ € 5.140,00	+ € 16.140,00	+ € 35.220,00	+ € 5.507,00
HLA275Pro	+ € 2.939,00	+ € 3.661,00	+ € 6.677,00	+ € 4.044,00	+ € 7.709,00	+ € 5.438,00	+ € 16.882,00	+ € 36.694,00	+ € 5.873,00
HLA350Pro	+ € 2.939,00	+ € 3.661,00	+ € 6.677,00	+ € 4.044,00	+ € 7.709,00	+ € 5.438,00	+ € 16.882,00	+ € 36.694,00	+ € 5.873,00
HLA500Pro	+ € 2.939,00	+ € 4.920,00	+ € 6.902,00	+ € 4.631,00	+ € 8.662,00	+ € 5.873,00	+ € 19.823,00	+ € 44.026,00	+ € 6.607,00
HLA700Pro	+ € 4.163,00	+ € 5.064,00	+ € 8.166,00	+ € 4.768,00	+ € 8.916,00	+ € 6.045,00	+ € 20.405,00	+ € 45.322,00	+ € 6.800,00
HLA900Pro	+ € 4.163,00	+ € 7.329,00	+ € 10.953,00	+ € 4.768,00	+ € 8.916,00	+ € 7.105,00	+ € 24.177,00	+ € 53.629,00	+ € 8.306,00
HLA1000Pro	+ € 4.163,00	+ € 7.329,00	+ € 10.953,00	+ € 4.768,00	+ € 8.916,00	+ € 7.105,00	+ € 24.177,00	+ € 53.629,00	+ € 8.306,00
HLA1600Pro	+ € 12.088,00	+ € 12.469,00	+ € 15.480,00	+ € 5.216,00	+ € 10.041,00	+ € 9.070,00	+ € 25.685,00	+ € 56.653,00	+ € 9.070,00
HLA2000Pro	+ € 12.088,00	+ € 12.469,00	+ € 15.480,00	+ € 5.216,00	+ € 10.041,00	+ € 9.070,00	+ € 25.685,00	+ € 56.653,00	+ € 9.070,00
HLA2500Pro	+ € 20.018,00	+ € 15.040,00	+ € 18.134,00	+ € 6.949,00	+ € 13.218,00	+ € 10.953,00	+ € 28.704,00	+ € 63.453,00	+ € 10.197,00
HLA3300Pro	+ € 20.018,00	+ € 15.040,00	+ € 23.416,00	+ € 6.949,00	+ € 13.218,00	+ € 10.953,00	+ € 32.485,00	+ € 68.751,00	+ € 11.337,00
HLA4600Pro	AOR	AOR	AOR	AOR	AOR	AOR	AOR	AOR	AOR
HLA5600Pro	AOR	AOR	AOR	AOR	AOR	AOR	AOR	AOR	AOR
HLA6800Pro	AOR	AOR	AOR	AOR	AOR	AOR	AOR	AOR	AOR
HLA8500Pro	AOR	AOR	AOR	AOR	AOR	AOR	AOR	AOR	AOR

Model	Air flow	Fittings	Code	Standard	Price	Standard Voltage
EN Model	Air flow	Fittings	Code	Standard	Price	Standard voltage
IT Modello	Portata	Conessioni	Codice	Standard	Prezzo	Voltaggio standard

Model	Standard Voltage Volt/Ph/Hz	Max pressure bar
HLA 160 - 8500 Pro	230/1/50	10

Max pressure	Options	OPT -70	OPT EMS	OPT 70E	OPT AF
EN Max pressure	Options	Dewpoint -70°C	Energy Management System	OPT -70 + OPT EMS	NPT/ANSI connections
IT Pressione massima	Optionals	Punto di rugiada -70°C	Sistema di risparmio energetico	OPT -70 + OPT EMS	Conessioni NPT/ANSI

OPT 60H	Air flow*
EN Voltage: 230/1/60	With OPT -70, the higher performances reduce the flowrate to 80% of the standard model nominal flowrate
IT Voltaggio: 230/1/60	Con l'optional OPT -70, le maggiori prestazioni ridimensionano la portata all'80% della portata nominale dei modelli standard

OPT BY	OPT 80	OPT ASU	OPT WDC	OPT GV
EN 3 Valves + bypass	80 dB silencer	ASME Design	Wooden cage	Galvanized vessels
IT 3 Valvole + bypass	Silenziatore 80 dB	Progettato secondo ASME	Gabbia in legno	Serbatoi zincati

OPT VI	OPT LT
EN Tower insulation	Low temperature kit 1 Insulation for vessels + heater for electrical cabinet + heater for filters' drain
IT Isolamento serbatoi	Kit basse temperature 1 Isolamento serbatoi + resistenza per scatola elettrica + resistenza per gli scaricatori dei filtri

OPT LTC	OPT SB
EN Low temperature kit 2 Cabinet for complete dryer equipped with internal thermal protection	Seaworthy packaging
IT Kit basse temperature 2 Custodia per essiccatore completo con protezione termica interna	Imballaggio per trasporto marittimo



Heatless desiccant dryers - HLA Pro Series

Heatless desiccant dryers / Essiccatori ad adsorbimento con rigenerazione a freddo

Model	Options		
	OPT MP	OPT SF	OPT DF
	Marine painting	IN / OUT filters*	Dual filter package
HLA160Pro	+ € 3.661,00	+ € 2.466,00	+ € 12.000,00
HLA200Pro	+ € 3.661,00	+ € 2.466,00	+ € 12.000,00
HLA275Pro	+ € 3.661,00	+ € 2.819,00	+ € 14.563,00
HLA350Pro	+ € 3.661,00	+ € 2.819,00	+ € 14.563,00
HLA500Pro	+ € 4.992,00	+ € 3.147,00	+ € 18.565,00
HLA700Pro	+ € 5.139,00	+ € 3.242,00	+ € 19.112,00
HLA900Pro	+ € 6.949,00	+ € 3.473,00	+ € 20.099,00
HLA1000Pro	+ € 6.949,00	+ € 3.473,00	+ € 20.099,00
HLA1600Pro	+ € 8.699,00	+ € 6.800,00	AOR
HLA2000Pro	+ € 8.699,00	+ € 7.248,00	AOR
HLA2500Pro	+ € 11.707,00	+ € 15.105,00	AOR
HLA3300Pro	+ € 11.707,00	+ € 19.938,00	AOR
HLA4600Pro	AOR	AOR	AOR
HLA5600Pro	AOR	AOR	AOR
HLA6800Pro	AOR	AOR	AOR
HLA8500Pro	AOR	AOR	AOR

Options		
OPT CP	Pneumatic control	+ € 13.375,00
OPT FS	Fail to shift	+ € 2.039,00
OPT RE	Retrofit EMS	+ € 9.826,00
OPT SS	Stainless steel control air lines	+ € 4.834,00
OPT 65	IP65	+ € 3.548,00
OPT DR	4-20mA Output remote dew point	+ € 4.758,00
OPT RA	Remote alarm	+ € 1.967,00
OPT LG	Liquid filled gauges	+ € 1.592,00
OPT DPS	Transmitter for pressure loss on filters	+ € 5.896,00
OPT RC	Remote access	+ € 1.725,00

Model	Options	OPT MP	OPT DF	
EN	Model	Options	Marine painting	Dual filter package
IT	Modello	Optional	Verniciatura per ambiente marino	Kit doppio filtro

	OPT RA	OPT CP	OPT SS
EN	Remote alarm	Pneumatic control	Stainless steel control air lines
IT	Allarme remoto	Controllo pneumatico	Tubi dell'aria in acciaio inossidabile

	OPT SF	OPT FS	OPT DPS
EN	IN-OUT filters complete with differential gauge and SC-12 drain	Fail to Shift (pressure switches in electrical enclosure and pressure lines from each tower)	Transmitter for pressure loss for filters
IT	Filtri IN-OUT completi di manometro e scaricatore SC-12	Allarmi di pressione (pressostati nel box elettrico collegati a ogni serbatoio)	Contatto elettrico per intasamento filtri

	OPT RE	OPT SS	OPT 65
EN	Retrofit EMS (Dew point meter + Connection cable)	Stainless steel control air lines	IP65 electrical rating plus stainless steel control box
IT	Retrofit EMS (Sensore di punto di rugiada + cavi di connessione)	Tubi dell'aria in acciaio inossidabile	Protezione IP65 + scatola di controllo di acciaio inossidabile

	OPT DR	OPT LG	OPT RC	AOR
EN	4-20mA Output / remote dew point	Liquid filled gauges	Remote access: Cable + software CD	Available On Request
IT	4-20mA Output / remoto punto di rugiada	Manometri con glicerina	Accesso remoto: Cablaggio + CD software	Disponibile su richiesta

Heated blower desiccant dryers - HBA Series

Heated blower desiccant dryers / Essiccatori ad adsorbimento con rigenerazione a caldo

Model	Air flow			Fittings	Code	Price
	l/min	m³/h	CFM	BSP	Standard	
HBA 500	8333	500	294	2"	08V.0500HGB0	€ 63.879,00
HBA 900	15000	900	529	2"	08V.0900HGB0	€ 73.965,00
HBA 1100	18333	1100	647	3"	08V.1100HGB0	€ 84.051,00
HBA 1400	23333	1400	824	3"	08V.1400HGB0	€ 88.533,00
HBA 1800	30000	1800	1059	3"	08V.1800HGB0	€ 98.620,00
HBA 2200	36667	2200	1294	3"	08V.2200HGB0	€ 103.103,00
HBA 2600	43333	2600	1529	3"	08V.2600HGB0	€ 125.516,00
HBA 3200	53333	3200	1882	DN 100	08V.3200HGB0	€ 126.636,00
HBA 3900	65000	3900	2294	DN 100	08V.3900HGB0	€ 137.843,00
HBA 4500	75000	4500	2648	DN 150	08V.4500HGB0	€ 169.222,00
HBA 5300	88333	5300	3118	DN 150	08V.5300HGB0	€ 184.913,00
HBA 7000	116667	7000	4118	DN 150	08V.7000HGB0	€ 210.687,00
HBA 9300	155000	9300	5471	DN 150	08V.9300HGB0	€ 246.549,00
HBA 10600	176667	10600	6235	DN 150	08V.A106HGB0	€ 313.790,00
HBA 14900	248333	14900	8765	DN 200	08V.A149HGB0	€ 403.444,00

Options	
OPT AF	OPT 46V
NPT/ANSI connections	460/3/60
+ € 2.039,00	+ € 7.936,00
+ € 2.344,00	+ € 10.581,00
+ € 2.570,00	+ € 11.562,00
+ € 2.796,00	+ € 12.545,00
+ € 2.796,00	+ € 13.979,00
+ € 2.796,00	+ € 14.731,00
+ € 2.344,00	+ € 16.615,00
+ € 2.572,00	+ € 20.018,00
+ € 3.770,00	+ € 21.151,00
+ € 4.152,00	+ € 24.173,00
+ € 4.536,00	+ € 27.194,00
+ € 5.216,00	+ € 33.993,00
+ € 5.813,00	+ € 40.791,00
+ € 6.800,00	+ € 47.594,00
+ € 7.936,00	+ € 58.925,00



Model	Standard Voltage Volt/Ph/Hz	Max pressure bar
HBA 500 - 14900	400/3/50	10

Model	Options										
	OPT BY	OPT SS	OPT ASU	OPT WDC	OPT SB	OPT GV	OPT 65	OPT SF	OPT DF	OPT VI	OPT MP
	3 Valves + bypass	Stainless steel control air line	ASME Design	Wooden cage	Seaworthy packaging	Galvanized vessels	IP65	IN / OUT filters	Dual filter package	Tower insulation	Marine painting
HBA 500	+ € 3.027,00	+ € 4.461,00	+ € 7.172,00	+ € 4.910,00	+ € 9.070,00	+ € 6.800,00	+ € 7.172,00	AOR	+ € 18.763,00	+ € 8.699,00	+ € 5.670,00
HBA 900	+ € 4.163,00	+ € 4.461,00	+ € 10.953,00	+ € 4.910,00	+ € 9.070,00	+ € 7.172,00	+ € 7.172,00	AOR	+ € 20.099,00	+ € 10.197,00	+ € 7.559,00
HBA 1100	+ € 12.088,00	+ € 4.461,00	+ € 5.291,00	+ € 5.291,00	+ € 9.070,00	+ € 8.121,00	+ € 7.172,00	AOR	+ € 34.604,00	+ € 11.334,00	+ € 7.932,00
HBA 1400	+ € 12.088,00	+ € 4.461,00	+ € 12.845,00	+ € 5.291,00	+ € 9.070,00	+ € 9.070,00	+ € 7.172,00	AOR	+ € 49.111,00	+ € 12.469,00	+ € 8.306,00
HBA 1800	+ € 12.088,00	+ € 6.426,00	+ € 19.799,00	+ € 5.291,00	+ € 9.070,00	+ € 9.070,00	+ € 15.870,00	AOR	+ € 49.111,00	+ € 13.598,00	+ € 9.070,00
HBA 2200	+ € 12.088,00	+ € 6.426,00	+ € 19.799,00	+ € 7.172,00	+ € 13.218,00	+ € 9.070,00	+ € 15.870,00	AOR	+ € 51.067,00	+ € 13.598,00	+ € 9.667,00
HBA 2600	+ € 20.018,00	+ € 6.426,00	+ € 24.177,00	+ € 7.172,00	+ € 13.218,00	+ € 11.337,00	+ € 15.870,00	AOR	+ € 51.820,00	+ € 18.134,00	+ € 10.350,00
HBA 3200	+ € 21.533,00	+ € 6.426,00	+ € 24.177,00	+ € 7.172,00	+ € 13.218,00	+ € 11.337,00	+ € 15.870,00	AOR	AOR	+ € 18.134,00	+ € 11.337,00
HBA 3900	+ € 21.533,00	+ € 8.699,00	+ € 24.177,00	+ € 8.699,00	+ € 15.870,00	+ € 12.845,00	+ € 20.018,00	AOR	AOR	+ € 18.134,00	+ € 12.845,00
HBA 4500	+ € 26.069,00	+ € 8.699,00	AOR	+ € 8.699,00	+ € 15.870,00	+ € 13.975,00	+ € 20.018,00	AOR	AOR	+ € 20.401,00	+ € 13.599,00
HBA 5300	+ € 26.069,00	+ € 8.699,00	AOR	+ € 8.699,00	+ € 15.870,00	+ € 15.105,00	+ € 20.018,00	AOR	AOR	+ € 22.668,00	+ € 14.353,00
HBA 7000	+ € 26.815,00	+ € 8.699,00	AOR	+ € 8.699,00	+ € 15.870,00	+ € 16.615,00	+ € 20.018,00	AOR	AOR	+ € 22.668,00	+ € 21.533,00
HBA 9300	+ € 26.815,00	+ € 12.545,00	AOR	+ € 10.197,00	+ € 19.642,00	+ € 20.405,00	+ € 20.018,00	AOR	AOR	+ € 30.975,00	+ € 24.177,00
HBA 10600	+ € 31.724,00	+ € 12.545,00	AOR	+ € 10.197,00	+ € 19.642,00	+ € 24.177,00	+ € 20.018,00	AOR	AOR	+ € 35.513,00	+ € 28.704,00
HBA 14900	+ € 37.774,00	+ € 13.218,00	AOR	+ € 10.581,00	+ € 19.642,00	+ € 32.485,00	+ € 24.932,00	AOR	AOR	+ € 41.548,00	+ € 36.258,00

Options		
OPT DR	4-20mA Output remote dew point	+ € 4.758,00
OPT RA	Remote alarm	+ € 1.967,00
OPT DPS	Transmitter for pressure loss on filters	HBA 500 - HBA 5300 + € 5.896,00
		HBA 7000 - HBA 14900 + € 7.479,00
OPT RC	Remote access	+ € 1.725,00

Model	Air flow	Fittings
EN	Model	Fittings
IT	Modello	Connessioni
	Code	Price
EN	Code	Price
IT	Codice	Prezzo

Standard Voltage	Max pressure	Options	OPT AF	OPT 46V	OPT DR	OPT DPS	OPT RC
EN	Standard voltage	Options	NPT/ANSI connections	Voltage 460/3/60	4-20mA Output remote dew point	Transmitter for pressure loss for filters	Remote access: Cable + software CD
IT	Voltaggio standard	Optionals	Connessioni NPT/ANSI	Voltaggio 460/3/60	4-20mA Output remoto punto di rugiada	Contatto elettrico per intasamento filtri	Accesso remoto: Cablaggio + CD software

OPT RA	OPT BY	OPT SS	OPT ASU	OPT WDC	OPT GV	OPT SB	OPT 65	OPT DF
EN	Remote alarm	3 Valves + bypass	Stainless steel control air lines	ASME Design	Wooden cage	Galvanized vessels	Seaworthy packaging	Dual filter package
IT	Allarme remoto	3 Valvole + bypass	Tubi dell'aria in acciaio inossidabile	Progettato secondo ASME	Gabbia in legno	Serbatoi zincati	Imballaggio per trasporto marittimo	Kit doppio filtro

OPT VI	OPT MP	OPT SF	AOR	Special HOC Series - Modelli speciali HOC
EN	Tower insulation	Marine painting	Available On Request	Available on request HOC series (Heat of Compression) For further information contact our sales department
IT	Isolamento serbatoi	Verniciatura per ambiente marino	Disponibile su richiesta	Disponibile su richiesta la serie HOC (A recupero di calore) Per maggiori informazioni contattare il nostro ufficio commerciale

Nitrogen generators - N Series

Nitrogen generators / Generatori di azoto

Model	Nitrogen purity	Air flow			Fittings		Code	Price
					IN	OUT		
	%	l/min	m ³ /h	CFM	BSP	BSP		
N2	95% - 97%	220	13,2	7,8	½"	½"	08T.0013LG	€ 28.665,00
	98% - 99%	155	9,3	5,5	½"	½"	08T.0009MG	
	99.5% - 99.95%	108	6,5	3,8	½"	½"	08T.0006NG	
	99.99% - 99.999%	53	3,2	1,9	½"	½"	08T.0003PG	
	99.9995%	22	1,3	0,8	½"	½"	08T.0001AG	
N4	95% - 97%	440	26,4	15,5	½"	½"	08T.0026LG	€ 32.976,00
	98% - 99%	310	18,6	10,9	½"	½"	08T.0019MG	
	99.5% - 99.95%	217	13,0	7,7	½"	½"	08T.0013NG	
	99.99% - 99.999%	107	6,4	3,8	½"	½"	08T.0006PG	
	99.9995%	42	2,5	1,5	½"	½"	08T.0002AG	
N6	95% - 97%	660	39,6	23,3	½"	½"	08T.0040LG	€ 36.131,00
	98% - 99%	465	27,9	16,4	½"	½"	08T.0028MG	
	99.5% - 99.95%	323	19,4	11,4	½"	½"	08T.0019NG	
	99.99% - 99.999%	158	9,5	5,6	½"	½"	08T.0009PG	
	99.9995%	63	3,8	2,2	½"	½"	08T.0004AG	
N9	95% - 97%	990	59,4	35,0	¾"	½"	08T.0059LG	€ 40.547,00
	98% - 99%	698	41,9	24,7	½"	½"	08T.0042MG	
	99.5% - 99.95%	487	29,2	17,2	½"	½"	08T.0029NG	
	99.99% - 99.999%	238	14,3	8,4	½"	½"	08T.0014PG	
	99.9995%	93	5,6	3,3	½"	½"	08T.0006AG	
N12	95% - 97%	1.318	79,1	46,6	¾"	½"	08T.0079LG	€ 46.121,00
	98% - 99%	932	55,9	32,9	¾"	½"	08T.0056MG	
	99.5% - 99.95%	648	38,9	22,9	¾"	½"	08T.0039NG	
	99.99% - 99.999%	318	19,1	11,2	¾"	½"	08T.0019PG	
	99.9995%	125	7,5	4,4	¾"	½"	08T.0008AG	
N15	95% - 97%	1.648	98,9	58,2	¾"	½"	08T.0099LG	€ 51.211,00
	98% - 99%	1.163	69,8	41,1	¾"	½"	08T.0070MG	
	99.5% - 99.95%	810	48,6	28,6	¾"	½"	08T.0049NG	
	99.99% - 99.999%	398	23,9	14,1	¾"	½"	08T.0024PG	
	99.9995%	157	9,4	5,5	¾"	½"	08T.0009AG	
N20	95% - 97%	2.198	131,9	77,6	1"	¾"	08T.0132LG	€ 60.885,00
	98% - 99%	1.552	93,1	54,8	1"	¾"	08T.0093MG	
	99.5% - 99.95%	1.080	64,8	38,1	¾"	¾"	08T.0065NG	
	99.99% - 99.999%	530	31,8	18,7	¾"	¾"	08T.0032PG	
	99.9995%	208	12,5	7,4	¾"	¾"	08T.0013AG	
N27	95% - 97%	2.968	178,1	104,8	1"¼"	¾"	08T.0178LG	€ 66.404,00
	98% - 99%	2.095	125,7	74,0	1"¼"	¾"	08T.0126MG	
	99.5% - 99.95%	1.458	87,5	51,5	1"	¾"	08T.0088NG	
	99.99% - 99.999%	715	42,9	25,2	1"	¾"	08T.0043PG	
	99.9995%	282	16,9	9,9	1"	¾"	08T.0017AG	
N35	95% - 97%	3.847	230,8	135,8	1"¼"	1"	08T.0231LG	€ 77.551,00
	98% - 99%	2.715	162,9	95,9	1"¼"	1"	08T.0163MG	
	99.5% - 99.95%	1.890	113,4	66,7	1"¼"	1"	08T.0113NG	
	99.99% - 99.999%	928	55,7	32,8	1"	1"	08T.0056PG	
	99.9995%	365	21,9	12,9	1"	1"	08T.0022AG	



Nitrogen generators - N Series

Nitrogen generators / Generatori di azoto

Model	Nitrogen purity	Air flow			Fittings		Code	Price
					IN	OUT		
	%	l/min	m ³ /h	CFM	BSP	BSP		
N50	95% - 97%	5.495	329,7	194,1	1"½	1"½	08T.0330LG	€ 112.347,00
	98% - 99%	3.880	232,8	137,0	1"½	1"½	08T.0233MG	
	99.5% - 99.95%	2.700	162,0	95,3	1"½	1"½	08T.0162NG	
	99.99% - 99.999%	1.325	79,5	46,8	1"¼	1"¼	08T.0080PG	
	99.9995%	522	31,3	18,4	1"¼	1"¼	08T.0031AG	
N65	95% - 97%	7.145	428,7	252,3	2"	1"½	08T.0429LG	€ 129.066,00
	98% - 99%	5.043	302,6	178,1	2"	1"½	08T.0303MG	
	99.5% - 99.95%	3.508	210,5	123,9	1"½	1"	08T.0211NG	
	99.99% - 99.999%	1.723	103,4	60,9	1"½	1"	08T.0103PG	
	99.9995%	678	40,7	24,0	1"½	1"	08T.0041AG	
N80	95% - 97%	8.793	527,6	310,5	2"	1"¼	08T.0528LG	€ 149.361,00
	98% - 99%	6.207	372,4	219,2	2"	1"¼	08T.0372MG	
	99.5% - 99.95%	4.318	259,1	152,5	1"½	1"	08T.0259NG	
	99.99% - 99.999%	2.120	127,2	74,9	1"½	1"	08T.0127PG	
	99.9995%	833	50,0	29,4	1"½	1"	08T.0050AG	
N100	95% - 97%	10.992	659,5	388,2	1"½	1"½	08T.0660LG	€ 177.185,00
	98% - 99%	7.758	465,5	274,0	2"	1"¼	08T.0466MG	
	99.5% - 99.95%	5.398	323,9	190,6	2"	1"¼	08T.0324NG	
	99.99% - 99.999%	2.652	159,1	93,6	2"	1"¼	08T.0159PG	
	99.9995%	1.043	62,6	36,8	2"	1"¼	08T.0063AG	
N125	95% - 97%	13.740	824,4	485,2	1"½	2"	08T.0824LG	€ 199.478,00
	98% - 99%	9.698	581,9	342,5	1"½	2"	08T.0582MG	
	99.5% - 99.95%	6.748	404,9	238,3	2"	1"¼	08T.0405NG	
	99.99% - 99.999%	3.313	198,8	117,0	2"	1"¼	08T.0199PG	
	99.9995%	1.303	78,2	46,0	2"	1"¼	08T.0078AG	
N150	95% - 97%	16.487	989,2	582,2	1"½	2"	08T.0989LG	€ 232.180,00
	98% - 99%	11.638	698,3	411,0	1"½	2"	08T.0698MG	
	99.5% - 99.95%	8.098	485,9	286,0	1"½	2"	08T.0486NG	
	99.99% - 99.999%	3.977	238,6	140,4	2"	1"¼	08T.0239PG	
	99.9995%	1.563	93,8	55,2	2"	1"¼	08T.0094AG	



Model	Standard Voltage	Max compressed air inlet pressure	Nitrogen outlet pressure		Ambient temperature	
			MIN	MAX	MIN	MAX
	Volt/Ph/Hz	bar	bar	bar	°C	°C
N2 - N150	230-120/1/50-60	10	5	10	5	50

Model	Nitrogen purity	Air flow	Fittings	Code	Price	Standard voltage	Max compressed air inlet pressure	
EN	Model	Nitrogen purity	Air flow	Fittings	Code	Price	Standard voltage	Max compressed air inlet pressure
IT	Modello	Purezza azoto	Portata	Conessioni	Codice	Prezzo	Voltaggio standard	Pressione massima ingresso aria compressa

	Nitrogen outlet pressure	Ambient temperature
EN	Nitrogen outlet pressure	Ambient temperature
IT	Pressione uscita azoto	Temperatura ambiente

Oxygen generators - O Series

Oxygen generators / Generatori di ossigeno

Model	Oxygen purity	Air flow			Fittings		Code	Price
					IN	OUT		
	%	l/min	m ³ /h	CFM	BSP	BSP		
O2	90	19	1,1	0,7	½"	½"	08Y.0017.G	€ 28.446,00
	93	17	1,0	0,6	½"	½"		
	95	17	1,0	0,6	½"	½"		
O4	90	40	2,4	1,4	½"	½"	08Y.0034.G	€ 29.766,00
	93	37	2,2	1,3	½"	½"		
	95	34	2,1	1,2	½"	½"		
O6	90	50	3,0	1,8	½"	½"	08Y.0040.G	€ 31.416,00
	93	45	2,7	1,6	½"	½"		
	95	40	2,4	1,4	½"	½"		
O9	90	68	4,1	2,4	¾"	½"	08Y.0057.G	€ 32.626,00
	93	64	3,8	2,2	¾"	½"		
	95	57	3,4	2,0	¾"	½"		
O12	90	96	5,8	3,4	¾"	½"	08Y.0081.G	€ 35.266,00
	93	90	5,4	3,2	¾"	½"		
	95	81	4,8	2,8	¾"	½"		
O15	90	130	7,8	4,6	¾"	½"	08Y.0110.G	€ 39.886,00
	93	123	7,4	4,3	¾"	½"		
	95	110	6,6	3,9	¾"	½"		
O20	90	158	9,5	5,6	1"	¾"	08Y.0133.G	€ 46.376,00
	93	147	8,8	5,2	1"	¾"		
	95	133	8,0	4,7	1"	¾"		
O20+	90	177	10,6	6,2	1"	¾"	08Y.0149.G	€ 48.576,00
	93	166	10,0	5,9	1"	¾"		
	95	149	8,9	5,3	1"	¾"		
O27	90	226	13,6	8,0	1" ¼"	¾"	08Y.0191.G	€ 49.566,00
	93	211	12,7	7,4	1" ¼"	¾"		
	95	191	11,4	6,7	1" ¼"	¾"		
O27+	90	240	14,4	8,5	1" ¼"	¾"	08Y.0203.G	€ 52.426,00
	93	225	13,5	7,9	1" ¼"	¾"		
	95	203	12,2	7,2	1" ¼"	¾"		
O35	90	288	17,3	10,2	1" ¼"	1"	08Y.0243.G	€ 53.526,00
	93	270	16,2	9,5	1" ¼"	1"		
	95	243	14,6	8,6	1" ¼"	1"		
O35+	90	315	18,9	11,1	1" ¼"	1"	08Y.0265.G	€ 55.176,00
	93	295	17,7	10,4	1" ¼"	1"		
	95	265	15,9	9,4	1" ¼"	1"		
O50	90	361	21,7	12,8	1" ½"	1" ½"	08Y.0304.G	€ 82.566,00
	93	338	20,3	11,9	1" ½"	1" ½"		
	95	304	18,2	10,7	1" ½"	1" ½"		
O50+	90	448	26,9	15,8	1" ½"	1" ½"	08Y.0378.G	€ 84.876,00
	93	420	25,2	14,8	1" ½"	1" ½"		
	95	378	22,7	13,4	1" ½"	1" ½"		
O65	90	498	29,9	17,6	2"	1" ½"	08Y.0419.G	€ 87.626,00
	93	465	27,9	16,4	2"	1" ½"		
	95	419	25,1	14,8	2"	1" ½"		
O65+	90	578	34,7	20,4	2"	1" ½"	08Y.0487.G	€ 93.236,00
	93	541	32,5	19,1	2"	1" ½"		
	95	487	29,2	17,2	2"	1" ½"		



Oxygen generators - O Series

Oxygen generators / Generatori di ossigeno

Model	Oxygen purity	Air flow			Fittings		Code	Price
					IN	OUT		
	%	l/min	m ³ /h	CFM	BSP	BSP		
O80	90	633	38,0	22,3	2"	1" ¼	08Y.0533.G	€ 99.396,00
	93	592	35,5	20,9	2"	1" ¼		
	95	533	32,0	18,8	2"	1" ¼		
O80+	90	715	42,9	25,2	2"	1" ¼	08Y.0600.G	€ 102.366,00
	93	668	40,1	23,6	2"	1" ¼		
	95	600	36,0	21,2	2"	1" ¼		
O100	90	814	48,8	28,7	2" ½	1" ½	08Y.0684.G	€ 111.936,00
	93	761	45,7	26,9	2" ½	1" ½		
	95	684	41,0	24,1	2" ½	1" ½		
O100+	90	885	53,1	31,3	2" ½	1" ½	08Y.0744.G	€ 114.906,00
	93	828	49,7	29,2	2" ½	1" ½		
	95	744	44,6	26,3	2" ½	1" ½		
O125	90	994	59,6	35,1	2" ½	2"	08Y.0930.G	€ 121.506,00
	93	930	55,8	32,8	2" ½	2"		
	95	837	50,2	29,6	2" ½	2"		
O125+	90	1.085	65,1	38,3	2" ½	2"	08Y.0913.G	€ 124.916,00
	93	1.014	60,8	35,8	2" ½	2"		
	95	913	54,8	32,2	2" ½	2"		
O150	90	1.229	73,8	43,4	2" ½	2"	08Y.1034.G	€ 139.876,00
	93	1.149	68,9	40,6	2" ½	2"		
	95	1.034	62,0	36,5	2" ½	2"		
O150+	90	1.329	79,7	46,9	2" ½	2"	08Y.1118.G	€ 148.236,00
	93	1.242	74,5	43,9	2" ½	2"		
	95	1.118	67,1	39,5	2" ½	2"		



Model	Standard Voltage	Max compressed air inlet pressure	Oxygen outlet pressure		Ambient temperature	
			MIN	MAX	MIN	MAX
	Volt/Ph/Hz	bar	bar	bar	°C	°C
O2 - O150	230-120/1/50-60	10	4	8	5	50

Model	Oxygen purity	Air flow	Fittings	Code	Price	Standard voltage	Max compressed air inlet pressure
EN Model	Oxygen purity	Air flow	Fittings	Code	Price	Standard voltage	Max compressed air inlet pressure
IT Modello	Purezza ossigeno	Portata	Conessioni	Codice	Prezzo	Voltaggio standard	Pressione massima ingresso aria compressa

Oxygen outlet pressure	Ambient temperature
EN Oxygen outlet pressure	Ambient temperature
IT Pressione uscita ossigeno	Temperatura ambiente

Air cooled aftercoolers - RA Series

Air cooled aftercoolers / Raffreddatori finali ad aria

Model	Air flow			Fittings		Code	Price	Options		
	l/min	m ³ /h	CFM	IN	OUT	Standard		OPT P	OPT 60H	OPT 46V
				BSP	BSP			RA - P	230/1/60	460/3/60
RA 10	1000	60	35	1"	1"	02A.0060.G.0.0.0	€ 828,00	+ € 3.310,00	+ € 42,00	N/A
RA 20	2000	120	71	1"	1"	02A.0120.G.0.0.0	€ 1.286,00	+ € 3.299,00	+ € 66,00	N/A
RA 30	3000	180	106	1½"	1½"	02A.0180.G.0.0.0	€ 1.389,00	N/A	N/A	+ € 70,00
RA 40	4000	240	141	1½"	1½"	02A.0240.G.0.0.0	€ 1.545,00	+ € 3.198,00	N/A	+ € 79,00
RA 65	6500	390	229	2"	1½"	02A.0390AG.0.0.0	€ 2.160,00	+ € 3.140,00	N/A	+ € 109,00
RA 80	8000	480	282	2"	1½"	02A.0480AG.0.0.0	€ 2.377,00	+ € 3.124,00	N/A	+ € 119,00
RA 120	12000	720	424	2"	2"	02A.0720.G.0.0.0	€ 4.041,00	+ € 2.988,00	N/A	+ € 203,00
RA 160	16000	960	565	2½"	2½"	02A.0960.G.0.0.0	€ 4.675,00	+ € 3.068,00	N/A	+ € 230,00
RA 200	20000	1200	706	3"	2½"	02A.1200BG.0.0.0	€ 5.960,00	+ € 4.104,00	N/A	+ € 297,00
RA 250	25000	1500	882	3"	3"	02A.1500AG.0.0.0	€ 7.052,00	+ € 4.049,00	N/A	+ € 351,00
RA 300	30000	1800	1059	DN 100	DN 100	02A.1800AG.0.0.0	€ 9.316,00	+ € 3.921,00	N/A	+ € 466,00
RA 400	40000	2400	1412	DN 100	DN 100	02A.2400AG.0.0.0	€ 11.685,00	+ € 6.007,00	N/A	+ € 583,00
RA 500	50000	3000	1765	DN 125	DN 125	02A.3000.G.0.0.0	€ 14.334,00	+ € 5.864,00	N/A	+ € 718,00
RA 650	65000	3900	2294	DN 125	DN 125	02A.3900.G.0.0.0	€ 17.580,00	+ € 5.687,00	N/A	+ € 877,00
RA 750	75000	4500	2647	DN 150	DN 150	02A.4500.G.0.0.0	€ 19.722,00	+ € 5.563,00	N/A	+ € 987,00



Model	Options					
	OPT AF	OPT WS	OPT WM	OPT WMG	OPT WF	OPT WDC
	NPT/ANSI connections	Without Separator	Without motor	Without motor and without grid	Without frame	Wooden cage
RA 10	+ € 42,00	- € 72,00	- € 14,00	- € 17,00	- € 7,00	+ € 58,00
RA 20	+ € 66,00	- € 112,00	- € 14,00	- € 17,00	- € 10,00	+ € 89,00
RA 30	+ € 70,00	- € 122,00	- € 31,00	- € 32,00	- € 10,00	+ € 96,00
RA 40	+ € 79,00	- € 135,00	- € 30,00	- € 32,00	- € 10,00	+ € 110,00
RA 65	+ € 109,00	- € 96,00	- € 45,00	- € 48,00	- € 14,00	+ € 153,00
RA 80	+ € 119,00	- € 103,00	- € 47,00	- € 52,00	- € 16,00	+ € 165,00
RA 120	+ € 203,00	- € 177,00	- € 52,00	- € 63,00	- € 28,00	+ € 284,00
RA 160	+ € 230,00	- € 206,00	- € 46,00	- € 56,00	- € 31,00	+ € 328,00
RA 200	+ € 297,00	- € 261,00	- € 50,00	- € 66,00	- € 39,00	+ € 419,00
RA 250	+ € 351,00	- € 309,00	- € 89,00	- € 102,00	- € 46,00	+ € 494,00
RA 300	+ € 466,00	- € 1.225,00	- € 101,00	- € 123,00	- € 61,00	+ € 652,00
RA 400	+ € 583,00	- € 1.538,00	- € 131,00	- € 156,00	- € 77,00	+ € 821,00
RA 500	+ € 718,00	- € 1.884,00	- € 154,00	- € 186,00	- € 95,00	+ € 1.003,00
RA 650	+ € 877,00	- € 2.313,00	- € 204,00	- € 242,00	- € 115,00	+ € 1.231,00
RA 750	+ € 987,00	- € 2.594,00	- € 255,00	- € 297,00	- € 130,00	+ € 1.382,00

Model	Standard Voltage Volt/Ph/Hz	Max pressure bar
RA 10 - 20	230/1/50	16
RA 30 - 400	400/3/50	
RA 500 - 750		

Model	Air flow	Fittings	Code	Standard
EN Model	Air flow	Fittings	Code	Standard
IT Modello	Portata	Connessioni	Codice	Standard

Price	Standard Voltage	Max pressure	Options
EN Price	Standard voltage	Max pressure	Options
IT Prezzo	Voltaggio standard	Pressione massima	Optionals

OPT P	N/A	OPT 60H
EN Pneumatic motor	Not available	Voltage: 230/1/60
IT Motore pneumatico	Non disponibile	Voltaggio: 230/1/60

OPT 46V	OPT AF	OPT WS
EN Voltage: 460/3/60	NPT/ANSI connections	Without Separator
IT Voltaggio: 460/3/60	Connessioni NPT/ANSI	Senza separatore

OPT WM	OPT WMG	OPT WF	OPT WDC
EN Without motor	Without motor and without grid	Without frame	Wooden cage. In RA500-P, RA650-P and RA750-P models wooden cage is included in the price
IT Senza motore	Senza motore e senza griglia	Senza telaio	Gabbia in legno. Nei modelli RA500-P, RA650-P ed RA750-P la gabbia in legno è inclusa nel prezzo

Water cooled aftercoolers - A-AV Series

Water cooled aftercoolers / Raffreddatori finali ad acqua

Model	Air flow			Fittings		Code	Price
	l/min	m³/h	CFM	IN	OUT	Standard	
				BSP	BSP		
A 27	2667	160	94	DN 100	1½"	01A.0160.OCG.0	€ 3.516,00
A 42	4167	250	147	DN 100	1½"	01A.0250.OCG.0	€ 3.591,00
A 75	7500	450	265	DN 100	1½"	01A.0450.OCG.0	€ 3.737,00
A 125	12500	750	441	DN 100	2"	01A.0750.OCG.0	€ 4.007,00
A 160	16667	1000	589	DN 125	3"	01A.1000.OCG.0	€ 5.729,00
A 270	26667	1600	942	DN 125	3"	01A.1600.OCG.0	€ 5.760,00
A 350	35000	2100	1236	DN 150	3"	01A.2100.OCG.0	€ 6.903,00
A 450	45000	2700	1589	DN 200	DN 100	01A.2700.OCG.0	€ 10.930,00
A 560	56667	3400	2001	DN 200	DN 100	01A.3400.OCG.0	€ 11.825,00
A 800	80000	4800	2825	DN 250	DN 150	01A.4800.OCG.0	€ 15.656,00
A 1000	103333	6200	3649	DN 250	DN 150	01A.6200.OCG.0	€ 15.656,00
A 1250	125000	7500	4414	DN 250	DN 150	01A.7500.OCG.0	€ 19.610,00
A 1830	183333	11000	6474	DN 300	DN 200	01A.A110.OCG.0	€ 28.114,00
A 2500	250000	15000	8829	DN 400	DN 250	01A.A150.OCG.0	€ 41.016,00
A 3800	383333	23000	13537	DN 450	DN 250	01A.A230.OCG.0	€ 62.764,00
A 5100	516667	31000	18246	DN 500	DN 300	01A.A310.OCG.0	€ 78.493,00
A 6300	633333	38000	22366	DN 600	DN 350	01A.A380.OCG.0	€ 96.164,00

Options				
OPT AV	OPT SS	OPT WS	OPT IA	OPT UB
AV	Stainless steel	Without separator	Inlet adaptor	U-Bolt
+ € 1.078,00	+ € 1.496,00	- € 1.107,00	+ € 779,00	+ € 199,00
+ € 1.078,00	+ € 1.514,00	- € 1.107,00	+ € 779,00	+ € 199,00
+ € 1.101,00	+ € 1.531,00	- € 1.107,00	+ € 779,00	+ € 199,00
+ € 1.111,00	+ € 2.100,00	- € 1.298,00	+ € 779,00	+ € 199,00
+ € 1.345,00	+ € 1.645,00	- € 2.537,00	+ € 860,00	+ € 210,00
+ € 1.345,00	+ € 1.695,00	- € 2.537,00	+ € 860,00	+ € 210,00
+ € 1.534,00	+ € 1.989,00	- € 2.697,00	+ € 1.020,00	+ € 220,00
+ € 2.284,00	+ € 3.191,00	- € 4.742,00	+ € 1.450,00	+ € 250,00
+ € 2.284,00	+ € 2.678,00	- € 4.742,00	+ € 1.450,00	+ € 250,00
+ € 3.357,00	+ € 4.950,00	- € 6.168,00	+ € 1.880,00	+ € 340,00
+ € 3.357,00	+ € 4.950,00	- € 6.168,00	+ € 1.880,00	+ € 340,00
+ € 3.357,00	+ € 4.240,00	- € 8.650,00	+ € 1.880,00	+ € 340,00
+ € 3.627,00	+ € 6.178,00	AOR	AOR	+ € 435,00
+ € 5.797,00	+ € 6.775,00	AOR	AOR	+ € 599,00
+ € 6.597,00	+ € 8.990,00	AOR	AOR	+ € 650,00
+ € 11.785,00	+ € 12.515,00	AOR	AOR	+ € 720,00
+ € 15.790,00	+ € 12.853,00	AOR	AOR	+ € 950,00

Model	Max pressure bar	Max inlet temperature
A 27 - 1830	16	200°C
A 2500 - 6300	12	



Model	Air flow	Fittings	Code	Standard	Price	Max pressure	Options
EN Model	Air flow	Fittings	Code	Standard	Price	Max pressure	Options
IT Modello	Portata	Conessioni	Codice	Standard	Prezzo	Pressione massima	Optionals

	OPT AV	OPT SS	OPT WS	OPT IA	OPT WS	OPT UB
EN	Vertical installation	Stainless steel	Without separator	Inlet adaptor	Without separator	U-Bolt
IT	Installazione verticale	Acciaio Inox	Senza separatore	Adattatore ingresso	Senza separatore	Staffa a U

	EN	IT
	Other options available on request	Altri optionals disponibili su richiesta
OPT UW	Welded U-Bolt	Staffa ad U saldata
OPT BS	Additional BSP connections for water	Attacchi aggiuntivi per l'acqua BSP
OPT WF	Welded flanges for water	Flange saldate per l'acqua
OPT WH	Water high pressure (16 bar)	Alta pressione acqua (16 bar)
OPT UH	Cooler high pressure (30 bar)	Alta pressione aria (30 bar)

Standard filters - F Series

Standard compressed air filters / *Filtri standard per aria compressa*

Model	Air flow			Fittings	Filter				Price	Filter element				
	l/min	m³/h	CFM		BSP	QF	PF	HF		CF	QF	PF	HF	CF
F 0005	560	33	20	3/8"	04A.0030.Q	04A.0030.P	04A.0030.H	04A.0030.C	€ 156,00	04E.0030.Q	04E.0030.P	04E.0030.H	04E.0030.C	€ 45,00
F 0010	1.170	70	41	1/2"	04A.0060.Q	04A.0060.P	04A.0060.H	04A.0060.C	€ 173,00	04E.0060.Q	04E.0060.P	04E.0060.H	04E.0060.C	€ 49,00
F 0018	1.800	108	64	3/4"	04A.0108.Q	04A.0108.P	04A.0108.H	04A.0108.C	€ 208,00	04E.0108.Q	04E.0108.P	04E.0108.H	04E.0108.C	€ 68,00
F 0030	3.000	180	106	3/4"	04A.0180.Q	04A.0180.P	04A.0180.H	04A.0180.C	€ 235,00	04E.0180.Q	04E.0180.P	04E.0180.H	04E.0180.C	€ 73,00
F 0034	3.400	204	120	1"	04A.0204.Q	04A.0204.P	04A.0204.H	04A.0204.C	€ 258,00	04E.0204.Q	04E.0204.P	04E.0204.H	04E.0204.C	€ 79,00
F 0050	5.000	300	176	1"	04A.0300.Q	04A.0300.P	04A.0300.H	04A.0300.C	€ 282,00	04E.0300.Q	04E.0300.P	04E.0300.H	04E.0300.C	€ 89,00
F 0072	7.200	432	254	1 1/2"	04A.0432.Q	04A.0432.P	04A.0432.H	04A.0432.C	€ 338,00	04E.0432.Q	04E.0432.P	04E.0432.H	04E.0432.C	€ 96,00
F 0095	10.400	620	370	1 1/2"	04A.0570.Q	04A.0570.P	04A.0570.H	04A.0570.C	€ 450,00	04E.0570.Q	04E.0570.P	04E.0570.H	04E.0570.C	€ 125,00
F 0125	12.800	770	450	2"	04A.0750.Q	04A.0750.P	04A.0750.H	04A.0750.C	€ 526,00	04E.0750.Q	04E.0750.P	04E.0750.H	04E.0750.C	€ 168,00
F 0165	16.500	990	582	2"	04A.0990.Q	04A.0990.P	04A.0990.H	04A.0990.C	€ 574,00	04E.0990.Q	04E.0990.P	04E.0990.H	04E.0990.C	€ 201,00
F 0190	19.000	1.140	671	2 1/2"	04A.1140.Q	04A.1140.P	04A.1140.H	04A.1140.C	€ 613,00	04E.1140.Q	04E.1140.P	04E.1140.H	04E.1140.C	€ 217,00
F 0220	22.000	1.320	776	2 1/2"	04A.1320.Q	04A.1320.P	04A.1320.H	04A.1320.C	€ 725,00	04E.1320.Q	04E.1320.P	04E.1320.H	04E.1320.C	€ 289,00
F 0280	28.000	1.680	988	3"	04A.1680.Q	04A.1680.P	04A.1680.H	04A.1680.C	€ 1.657,00	04E.1680.Q	04E.1680.P	04E.1680.H	04E.1680.C	€ 342,00
F 0350	35.000	2.100	1.235	3"	04A.2100.Q	04A.2100.P	04A.2100.H	04A.2100.C	€ 1.793,00	04E.2100.Q	04E.2100.P	04E.2100.H	04E.2100.C	€ 382,00
F 0440	44.000	2.640	1.553	3"	04A.2640.Q	04A.2640.P	04A.2640.H	04A.2640.C	€ 1.954,00	04E.2640.Q	04E.2640.P	04E.2640.H	04E.2640.C	€ 448,00

Model	Max pressure (bar)
F 0005 - 0350	16
F 0440	13

Model	Air flow	Fittings	Price	Complete filter	
EN	Model	Air flow	Fittings	Price	Complete filter including element and manual drain
IT	Modello	Portata	Connessioni	Prezzo	Filtro completo di cartuccia e scaricatore manuale

	Filter element	QF	PF	HF	CF	N/A	Max pressure
EN	Filter element only	5µ filter	1µ – 0,1mg/m³ filter	0,01µ – 0,01mg/m³ filter	Activated carbon filter	Not available	Max pressure
IT	Solo cartuccia filtrante	Filtro 5µ	Filtro 1µ – 0,1mg/m³	Filtro 0,01µ – 0,01mg/m³	Filtro a carboni attivi	Non disponibile	Pressione massima

IMPORTANT NOTICE - AVVISO IMPORTANTE	
EN	Manual drain is included in standard filters, however, the installation of an automatic drain is recommended for coalescing filters (PF and HF)
IT	Lo scarico manuale è incluso nei filtri standard, tuttavia si raccomanda l'installazione di uno scaricatore automatico per i filtri a coalescenza (PF e HF)

Accessories / Accessori

Differential pressure gauge		
F 0005 - F 0440	045.F620.00.0000	€ 119,00
Differential pressure indicator		
F 0005 - F 0440	045.F720.00.0000	€ 41,00
Automatic condensate drain		
F 0005 - F 0440	045.F603.03.0000	€ 81,00

Connections	2 filters in line		3 filters in line		4 filters in line	
F 0005 - F 0030	045.F632.21	€ 102,00	045.F633.31	€ 153,00	045.F634.41	€ 201,00
F 0034 - F 0050	045.F632.22	€ 113,00	045.F633.32	€ 165,00	045.F634.42	€ 206,00
F 0072 - F 0095	045.F632.23	€ 136,00	045.F633.33	€ 201,00	045.F634.43	€ 277,00

Wall support	Single filter	2 filters in line		3 filters in line		4 filters in line		
F 0005 - F 0030	045.F631.01	€ 81,00	045.F635.21	€ 127,00	045.F636.31	€ 172,00	045.F637.41	€ 220,00
F 0034 - F 0050	045.F631.02	€ 102,00	045.F635.22	€ 184,00	045.F636.32	€ 201,00	045.F637.42	€ 243,00
F 0072 - F 0095	045.F631.02	€ 102,00	045.F635.23	€ 206,00	045.F636.33	€ 237,00	045.F637.43	€ 299,00

	Differential pressure gauge	Differential pressure indicator	Automatic condensate drain	Connections	Wall support	Single filter	# filters in line
EN	Differential pressure gauge	Differential pressure indicator	Automatic condensate drain	Connections	Wall support	Single filter	# filters in line
IT	Manometro differenziale	Indicatore differenziale	Scaricatore automatico	Connessioni	Connessione a muro	Filtro singolo	# filtri in linea



Standard filters - F Series

Standard compressed air filters / *Filtri standard per aria compressa*

Model	Air flow			Fittings	Filter				Price	Filter element					OPT FLG Optional flanges
	l/min	m ³ /h	CFM		BSP	QF	PF	HF		CF	QF	PF	HF	CF	
F 0460	46.000	2.760	1.620	DN 100	04F.2760.QG	04F.2760.PG	04F.2760.HG	04F.2760.CG	€ 6.050,00	04E.2760.Q	04E.2760.P	04E.2760.H	04E.2760.C	€ 612,00	+ € 91,00
F 0700	70.000	4.200	2.500	DN 125	04F.4200.QG	04F.4200.PG	04F.4200.HG	04F.4200.CG	€ 8.435,00	04E.4200.Q	04E.4200.P	04E.4200.H	04E.4200.C	€ 921,00	+ € 122,00
F 0950	95.000	5.700	3.300	DN 150	04F.5700.QG	04F.5700.PG	04F.5700.HG	04F.5700.CG	€ 9.028,00	04E.5700.Q	04E.5700.P	04E.5700.H	04E.5700.C	€ 1.219,00	+ € 165,00
F 1250	125.000	7.500	4.400	DN 150	04F.7500.QG	04F.7500.PG	04F.7500.HG	04F.7500.CG	€ 11.989,00	04E.7500.Q	04E.7500.P	04E.7500.H	04E.7500.C	€ 1.829,00	+ € 165,00
F 1550	155.000	9.300	5.400	DN 150	04F.9300.QG	04F.9300.PG	04F.9300.HG	04F.9300.CG	€ 14.999,00	04E.9300.Q	04E.9300.P	04E.9300.H	04E.9300.C	€ 2.134,00	+ € 221,00
F 1850	185.000	11.000	6.500	DN 200	04F.A110.QG	04F.A110.PG	04F.A110.HG	04F.A110.CG	€ 15.873,00	04E.A110.Q	04E.A110.P	04E.A110.H	04E.A110.C	€ 2.442,00	+ € 251,00
F 2500	240.000	14.200	8.400	DN 200	04F.A142.QG	04F.A142.PG	04F.A142.HG	04F.A142.CG	€ 22.033,00	04E.A142.Q	04E.A142.P	04E.A142.H	04E.A142.C	€ 3.661,00	+ € 416,00
F 3000	335.000	19.900	11.800	DN 250	04F.A199.QG	04F.A199.PG	04F.A199.HG	04F.A199.CG	€ 27.857,00	04E.A199.Q	04E.A199.P	04E.A199.H	04E.A199.C	€ 4.866,00	+ € 505,00
F 3500	520.000	31.000	18.500	DN 300	04F.A310.QG	04F.A310.PG	04F.A310.HG	04F.A310.CG	€ 35.622,00	04E.A310.Q	04E.A310.P	04E.A310.H	04E.A310.C	€ 6.700,00	+ € 595,00

Model	Max pressure bar
F 0460 - 3500	16

Model	Air flow	Fittings	Price	Complete filter	Filter element	
EN	Model	Air flow	Fittings	Price	Complete filter including element and manual drain	Filter element only
IT	Modello	Portata	Connessioni	Prezzo	Filtro completo di cartuccia e scaricatore manuale	Solo cartuccia filtrante

	QF	PF	HF
EN	5μ filter	1μ - 0,1mg/m ³ filter	0,01 μ - 0,01 mg/m ³ filter
IT	Filtro 5μ	Filtro 1μ - 0,1mg/m ³	Filtro 0,01 μ - 0,01 mg/m ³

	CF	OPT FLG	Max pressure
EN	Activated carbon filter	Optional flanges	Max pressure
IT	Filtro a carboni attivi	Flange opzionali	Pressione massima

IMPORTANT NOTICE - AVVISO IMPORTANTE	
EN	Manual drain (ball valve) is included in standard filters, however, the installation of an automatic drain is recommended for coalescing filters (PF and HF)
IT	Lo scarico manuale (valvola a sfera) è incluso nei filtri standard, tuttavia si raccomanda l'installazione di uno scaricatore automatico per i filtri a coalescenza (PF e HF)



Accessories / Accessori

Differential pressure gauge		
F 0460 - F 3500	045.F621.00.0000	€ 166,00
Differential pressure indicator		
F 0460 - F 3500	045.F721.00.0000	€ 127,00

	Differential pressure gauge	Differential pressure indicator
EN	Differential pressure gauge	Differential pressure indicator
IT	Manometro differenziale	Indicatore differenziale



Cyclone separators - SA / SRA Series

Cyclone condensate separators / Separatori di condensa ciclonici

Model	Air flow			Fittings	Code	Price
	l/min	m ³ /h	CFM	BSP	Standard	
SA 0005	500	30	18	3/8"	03A.0030AG	€ 143,00
SA 0010	1.000	60	35	1/2"	03A.0060AG	€ 154,00
SA 0030	3.000	180	106	3/4"	03A.0180AG	€ 163,00
SA 0050	5.000	300	176	1"	03A.0300AG	€ 220,00
SA 0095	9.500	570	335	1 1/2"	03A.0570AG	€ 300,00
SA 0165	16.500	990	582	2"	03A.0990AG	€ 500,00
SA 0220	22.000	1.320	776	2 1/2"	03A.1320AG	€ 595,00
SA 0450	45.000	2.700	1.588	3"	03A.2700AG	€ 1.520,00
SRA 400 AL	40.000	2.400	1.412	DN 100	03A.2400BG	€ 2.956,00
SRA 500 AL	50.000	3.000	1.765	DN 125	03A.3000BG	€ 3.276,00
SRA 0400	40.000	2.400	1.412	DN 100	03F.2400.G	€ 4.277,00
SRA 0500	65.000	3.900	2.297	DN 125	03F.3000.G	€ 4.761,00
SRA 1100	110.000	6.600	3.882	DN 150	03F.6600.G	€ 6.006,00
SRA 1250	125.000	7.500	4.412	DN 175	03F.7500.G	€ 6.897,00
SRA 2000	200.000	12.000	7.059	DN 200	03F.A120.G	€ 8.372,00
SA 0004 HP45	1.833	110	65	3/8"	03B.0024CG.0	€ 300,00
SA 0008 HP45	3.580	215	127	1/2"	03B.0048CG.0	€ 318,00
SA 0016 HP45	7.250	435	256	3/4"	03B.0096CG.0	€ 361,00
SA 0025 HP45	12.500	750	441	1"	03B.0150CG.0	€ 488,00
SA 0050 HP45	25.000	1.500	883	1"	03B.0300CG.0	€ 538,00
SA 0080 HP45	41.667	2.500	1.472	1 1/2"	03B.0500CG.0	€ 596,00

OPT FLG
Optional flanges
N/A
N/A
N/A
N/A
N/A
N/A
N/A
N/A
N/A
N/A
+ € 89,00
+ € 119,00
+ € 89,00
+ € 119,00
+ € 166,00
+ € 208,00
+ € 243,00
N/A
N/A
N/A
N/A



Model	Max pressure bar
SA 0005 - 0450	16
SRA 400 AL - SRA 500 AL	16
SRA 0400 - SRA 2000	12
SA 0004 HP45 - SA 0080 HP45	45

Model	Air flow	Fittings	Price	HP45	Optional flanges	Max pressure	
EN	Model	Air flow	Fittings	Price	Max pressure: 45 bar	Optional flanges	Max pressure
IT	Modello	Portata	Connessioni	Prezzo	Pressione massima: 45 bar	Flange opzionali	Pressione massima

IMPORTANT NOTICE - AVVISO IMPORTANTE

EN	Manual drain is included in SA/SRA separators, however, the installation of an automatic drain is recommended
IT	Lo scarico manuale è incluso negli scaricatori serie SA/SRA, tuttavia si raccomanda l'installazione di uno scaricatore automatico

Premium filters - Alps Series

Premium filters / Filtri premium

Model	Air flow			Fittings	Filter					Filter element				
	l/min	m³/h	CFM	BSP	QF	PF	HF	CF	Price	QF	PF	HF	CF	Price
AF30	500	30	18	3/8"	04A.0030AQG	04A.0030APG	04A.0030AHG	04A.0030ACG	€ 159,00	04E.0030AQ	04E.0030AP	04E.0030AH	04E.0030AC	€ 45,00
AF40	667	40	24	1/2"	04A.0040AQG	04A.0040APG	04A.0040AHG	04A.0040ACG	€ 182,00	04E.0040AQ	04E.0040AP	04E.0040AH	04E.0040AC	€ 48,00
AF75	1250	75	44	3/4"	04A.0075AQG	04A.0075APG	04A.0075AHG	04A.0075ACG	€ 212,00	04E.0075AQ	04E.0075AP	04E.0075AH	04E.0075AC	€ 68,00
AF110	1833	110	65	3/4"	04A.0110AQG	04A.0110APG	04A.0110AHG	04A.0110ACG	€ 235,00	04E.0110AQ	04E.0110AP	04E.0110AH	04E.0110AC	€ 73,00
AF190	3167	190	112	1"	04A.0190AQG	04A.0190APG	04A.0190AHG	04A.0190ACG	€ 243,00	04E.0190AQ	04E.0190AP	04E.0190AH	04E.0190AC	€ 79,00
AF260	4333	260	153	1"	04A.0260AQG	04A.0260APG	04A.0260AHG	04A.0260ACG	€ 278,00	04E.0260AQ	04E.0260AP	04E.0260AH	04E.0260AC	€ 91,00
AF400	6667	400	235	1 1/2"	04A.0400AQG	04A.0400APG	04A.0400AHG	04A.0400ACG	€ 338,00	04E.0400AQ	04E.0400AP	04E.0400AH	04E.0400AC	€ 97,00
AF500	8333	500	294	1 1/2"	04A.0500AQG	04A.0500APG	04A.0500AHG	04A.0500ACG	€ 454,00	04E.0500AQ	04E.0500AP	04E.0500AH	04E.0500AC	€ 133,00
AF800	13333	800	471	2"	04A.0800AQG	04A.0800APG	04A.0800AHG	04A.0800ACG	€ 526,00	04E.0800AQ	04E.0800AP	04E.0800AH	04E.0800AC	€ 183,00
AF1000	16667	1000	589	2"	04A.1000AQG	04A.1000APG	04A.1000AHG	04A.1000ACG	€ 574,00	04E.1000AQ	04E.1000AP	04E.1000AH	04E.1000AC	€ 201,00
AF1560	26000	1560	918	3"	04A.1560AQG	04A.1560APG	04A.1560AHG	04A.1560ACG	€ 1.695,00	04E.1560AQ	04E.1560AP	04E.1560AH	04E.1560AC	€ 380,00
AF1830	30500	1830	1077	3"	04A.1830AQG	04A.1830APG	04A.1830AHG	04A.1830ACG	€ 1.818,00	04E.1830AQ	04E.1830AP	04E.1830AH	04E.1830AC	€ 399,00
AF2700	45333	2720	1601	3"	04A.2700AQG	04A.2700APG	04A.2700AHG	04A.2700ACG	€ 1.975,00	04E.2700AQ	04E.2700AP	04E.2700AH	04E.2700AC	€ 437,00

Model	Code	Fittings	Price
		BSP	
AF 3/8"	04A.0001AOG	3/8"	€ 119,00
AF 1/2"	04A.0002AOG	1/2"	€ 135,00
AF 3/4"	04A.0003AOG	3/4"	€ 156,00
AF 1"	04A.0004AOG	1"	€ 185,00
AF 1 1/2"	04A.0005AOG	1 1/2"	€ 259,00
AF 2"	04A.0006AOG	2"	€ 376,00
AF 3" 200HP	04A.0007AOG	3"	€ 1.430,00
AF 3" 350HP	04A.0008AOG	3"	€ 1.547,00

Model	Max pressure (bar)
AF 30 - 2700 / AF 3/8" - 3" 350HP	17

Model	Air flow	Fittings	Price	Complete filter	Filter element	
EN	Model	Air flow	Fittings	Price	Complete filter including element and manual drain	Filter element only
IT	Modello	Portata	Connessioni	Prezzo	Filtro completo di cartuccia e scaricatore manuale	Solo cartuccia filtrante

	Max pressure	QF	PF	HF	CF
EN	Max pressure	1µ filter	0,1µ - 0,1mg/m³ filter	0,01µ - 0,01mg/m³ filter	Activated carbon filter
IT	Pressione massima	Filtro 1µ	Filtro 0,1µ - 0,1mg/m³	Filtro 0,01µ - 0,01mg/m³	Filtro a carboni attivi

IMPORTANT NOTICE - AVVISO IMPORTANTE

EN	Manual drain (ball valve) is now included in standard filters, however, the installation of an automatic drain is recommended for coalescing filters (PF and HF)
IT	Lo scarico manuale (valvola a sfera) è ora incluso nei filtri standard, tuttavia si raccomanda l'installazione di uno scaricatore automatico per i filtri a coalescenza (PF e HF)

Accessories / Accessori

Differential pressure gauge (Standard)		
AF 30 - AF 40 / AF 3/8" - AF 1/2"	045.F624.00.0000	€ 85,00
AF 75 - AF 2700 / AF 3/4" - 3" 350HP	045.F625.00.0000	€ 85,00
Differential pressure gauge (PDT version)		
AF 30 - AF 40 / AF 3/8" - AF 1/2"	045.F624.01.0000	€ 250,00
AF 75 - AF 2700 / AF 3/4" - 3" 350HP	045.F625.01.0000	€ 250,00
Automatic condensate drain		
AF 30 - AF 2700 / AF 3/8" - AF 3" 350HP	045.F603.04.0000	€ 64,00
Manual drain (Ball valve)		
AF 30 - AF 2700 / AF 3/8" - AF 3" 350HP	045.D400.G	€ 23,00



Connections	Clamp KIT
AF 30 - AF 40 / AF 3/8" - AF 1/2"	045.F642.21 € 55,00
AF 75 - AF 110 / AF 3/4"	045.F642.22 € 64,00
AF 190 - AF 500 / AF 1" - AF 1 1/2"	045.F642.23 € 75,00
AF 800 - AF 1000 / AF 2"	045.F642.24 € 297,00
AF 1560 - AF 2700 / AF 3" 200HP - AF 3" 350HP	045.F642.26 € 429,00

Wall support KIT	
045.F641.01	€ 97,00
045.F641.02	€ 133,00
045.F641.03	€ 165,00
045.F641.04	€ 215,00
045.F641.06	€ 348,00



	Differential pressure gauge	PDT version	Automatic condensate drain	Ball valve	Connections	Clamp KIT	Wall support KIT
EN	Differential pressure gauge	Transmitter included	Automatic condensate drain	Ball valve	Connections	Clamp KIT	Wall support KIT
IT	Manometro differenziale	Trasmettitore incluso	Scaricatore automatico	Valvola a sfera	Connessioni	KIT di connessione	KIT di fissaggio a muro

Condensate separators - Alps Series

Premium condensate separators / *Separatori di condensa premium*

Model	Air flow			Fittings	Code	Price
	l/min	m³/h	CFM	BSP	Standard	
SA 030 AF	500	30	18	3/8"	03A.0030FG	€ 181,00
SA 040 AF	667	40	24	1/2"	03A.0040FG	€ 189,00
SA 110 AF	1.833	110	65	3/4"	03A.0110FG	€ 219,00
SA 230 AF	3.833	230	135	1"	03A.0230FG	€ 264,00
SA 490 AF	8.167	490	288	1 1/2"	03A.0490FG	€ 340,00
SA 1000 AF	16.667	1.000	589	2"	03A.1000FG	€ 538,00
SA 2300 AF	38.333	2.300	1.354	3"	03A.2300FG	€ 1.737,00



Model	Max pressure bar
SA 030 AF - SA 2300 AF	17

Model	Air flow	Fittings	Code	Price	Max pressure	
EN	Model	Air flow	Fittings	Code	Price	Max pressure
IT	Modello	Portata	Connessioni	Codice	Prezzo	Pressione massima

IMPORTANT NOTICE - AVVISO IMPORTANTE

EN	Manual drain (ball valve) is now included in SA-AF separators, however, the installation of an automatic drain is recommended
IT	Lo scarico manuale (valvola a sfera) è ora incluso negli scaricatori serie SA-AF, tuttavia si raccomanda l'installazione di uno scaricatore automatico

High pressure filters - HP Series

High pressure filters / *Filtri per alta pressione*

Model	Air flow			Fittings	Filter				Price
	l/min	m³/h	CFM	BSP	QF	PF	HF	CF	
F 0004 HP	1833	110	65	3/8"	04B.0024BQ	04B.0024BP	04B.0024BH	04B.0024BC	€ 323,00
F 0008 HP	3580	215	127	1/2"	04B.0048BQ	04B.0048BP	04B.0048BH	04B.0048BC	€ 341,00
F 0016 HP	7200	435	256	3/4"	04B.0096BQ	04B.0096BP	04B.0096BH	04B.0096BC	€ 380,00
F 0025 HP	12500	750	441	1"	04B.0150BQ	04B.0150BP	04B.0150BH	04B.0150BC	€ 626,00
F 0050 HP	25000	1500	883	1"	04B.0300BQ	04B.0300BP	04B.0300BH	04B.0300BC	€ 699,00
F 0080 HP	41667	2500	1472	1 1/2"	04B.0500BQ	04B.0500BP	04B.0500BH	04B.0500BC	€ 884,00

Filter element				
QF	PF	HF	CF	Price
04E.0024BQ	04E.0024BP	04E.0024BH	04E.0024BC	€ 100,00
04E.0048BQ	04E.0048BP	04E.0048BH	04E.0048BC	€ 125,00
04E.0096BQ	04E.0096BP	04E.0096BH	04E.0096BC	€ 128,00
04E.0150BQ	04E.0150BP	04E.0150BH	04E.0150BC	€ 211,00
04E.0300BQ	04E.0300BP	04E.0300BH	04E.0300BC	€ 222,00
04E.0500BQ	04E.0500BP	04E.0500BH	04E.0500BC	€ 263,00

Model	Max pressure (bar)
F 0004 - 0080	45

Model	Air flow	Fittings	Price	Complete filter
EN	Model	Air flow	Price	Complete filter including element and manual drain
IT	Modello	Portata	Prezzo	Filtro completo di cartuccia e scaricatore manuale

Filter element	QF (F0004 - F0016)	QF (F0025 - F0080)	PF (F0004 - F0016)
EN	Filter element only	5µ filter	1µ - 0,1mg/m³ filter
IT	Solo cartuccia filtrante	Filtro 5µ	Filtro 1µ - 0,1mg/m³

PF (F0025 - F0080)	HF	CF	Max pressure	
EN	0,1µ - 0,1mg/m³ filter	0,01 µ - 0,01 mg/m³ filter	Activated carbon filter	Max pressure
IT	Filtro 0,1µ - 0,1mg/m³	Filtro 0,01 µ - 0,01 mg/m³	Filtro a carboni attivi	Pressione massima



IMPORTANT NOTICE - AVVISO IMPORTANTE

EN	Manual drain (ball valve) is included in standard filters, however, the installation of an automatic drain is recommended for coalescing filters (PF and HF)
IT	Lo scarico manuale (valvola a sfera) è incluso nei filtri standard, tuttavia si raccomanda l'installazione di uno scaricatore automatico per i filtri a coalescenza (PF e HF)

High temperature filters - AF HT & F HDT Series

High temperature filters / Filtri per alta temperatura

Model	Air flow			Fittings	Complete filter				Filter element				OPT FLG Optional flanges
	l/min	m³/h	CFM		BSP	QF	PF	HF	Price	QF	PF	HF	
AF HT 30	480	30	18	3/8"	04D.0030CQ	04D.0030CP	04D.0030CH	€ 280,00	04E.0030CQ	04E.0030CP	04E.0030CH	€ 100,00	N/A
AF HT 40	600	40	24	1/2"	04D.0040CQ	04D.0040CP	04D.0040CH	€ 329,00	04E.0040CQ	04E.0040CP	04E.0040CH	€ 114,00	N/A
AF HT 75	1.260	75	44	3/4"	04D.0075CQ	04D.0075CP	04D.0075CH	€ 409,00	04E.0075CQ	04E.0075CP	04E.0075CH	€ 147,00	N/A
AF HT 110	1.860	110	65	3/4"	04D.0110CQ	04D.0110CP	04D.0110CH	€ 549,00	04E.0110CQ	04E.0110CP	04E.0110CH	€ 193,00	N/A
AF HT 150	2.520	150	88	1"	04D.0150CQ	04D.0150CP	04D.0150CH	€ 658,00	04E.0150CQ	04E.0150CP	04E.0150CH	€ 237,00	N/A
AF HT 190	3.180	190	112	1"	04D.0190CQ	04D.0190CP	04D.0190CH	€ 749,00	04E.0190CQ	04E.0190CP	04E.0190CH	€ 272,00	N/A
AF HT 230	3.840	230	135	1"	04D.0230CQ	04D.0230CP	04D.0230CH	€ 877,00	04E.0230CQ	04E.0230CP	04E.0230CH	€ 317,00	N/A
AF HT 400	6.660	400	235	1 1/2"	04D.0400CQ	04D.0400CP	04D.0400CH	€ 998,00	04E.0400CQ	04E.0400CP	04E.0400CH	€ 362,00	N/A
AF HT 490	8.160	490	288	1 1/2"	04D.0490CQ	04D.0490CP	04D.0490CH	€ 1.197,00	04E.0490CQ	04E.0490CP	04E.0490CH	€ 430,00	N/A
AF HT 600	9.900	600	353	2"	04D.0600CQ	04D.0600CP	04D.0600CH	€ 1.296,00	04E.0600CQ	04E.0600CP	04E.0600CH	€ 465,00	N/A
AF HT 800	13.320	800	471	2"	04D.0800CQ	04D.0800CP	04D.0800CH	€ 1.526,00	04E.0800CQ	04E.0800CP	04E.0800CH	€ 544,00	N/A
AF HT 1000	16.680	1.000	588	2"	04D.1000CQ	04D.1000CP	04D.1000CH	€ 1.747,00	04E.1000CQ	04E.1000CP	04E.1000CH	€ 623,00	N/A
AF HT 1200	19.980	1.200	706	3"	04D.1200CQ	04D.1200CP	04D.1200CH	€ 1.845,00	04E.1200CQ	04E.1200CP	04E.1200CH	€ 656,00	N/A
AF HT 1560	25.980	1.560	918	3"	04D.1560CQ	04D.1560CP	04D.1560CH	€ 2.095,00	04E.1560CQ	04E.1560CP	04E.1560CH	€ 748,00	N/A
AF HT 1830	30.540	1.830	1.076	3"	04D.1830CQ	04D.1830CP	04D.1830CH	€ 2.394,00	04E.1830CQ	04E.1830CP	04E.1830CH	€ 860,00	N/A
AF HT 2300	38.340	2.300	1.353	3"	04D.2300CQ	04D.2300CP	04D.2300CH	€ 2.793,00	04E.2300CQ	04E.2300CP	04E.2300CH	€ 997,00	N/A
AF HT 2700	45.000	2.700	1.588	3"	04D.2700CQ	04D.2700CP	04D.2700CH	€ 3.193,00	04E.2700CQ	04E.2700CP	04E.2700CH	€ 1.144,00	N/A
F 0470 HDT	46.667	2.800	1.648	DN 100	04G.2800.QG	04G.2800.PG	04G.2800.HG	€ 6.736,00	04E.2800GQ	04E.2800GP	04E.2800GH	€ 1.265,00	+ € 1.201,00
F 0700 HDT	70.000	4.200	2.472	DN 125	04G.4200.QG	04G.4200.PG	04G.4200.HG	€ 9.152,00	04E.4200GQ	04E.4200GP	04E.4200GH	€ 1.796,00	+ € 1.944,00
F 0950 HDT	95.000	5.700	3.355	DN 150	04G.5700.QG	04G.5700.PG	04G.5700.HG	€ 10.246,00	04E.5700GQ	04E.5700GP	04E.5700GH	€ 2.127,00	+ € 2.465,00
F 1250 HDT	125.000	7.500	4.415	DN 150	04G.7500.QG	04G.7500.PG	04G.7500.HG	€ 13.177,00	04E.7500GQ	04E.7500GP	04E.7500GH	€ 3.101,00	+ € 2.539,00
F 1550 HDT	155.000	9.300	5.475	DN 150	04G.9300.QG	04G.9300.PG	04G.9300.HG	€ 16.982,00	04E.9300GQ	04E.9300GP	04E.9300GH	€ 4.102,00	+ € 2.614,00
F 1850 HDT	183.333	11.000	6.475	DN 200	04G.A110.QG	04G.A110.PG	04G.A110.HG	€ 18.161,00	04E.A110GQ	04E.A110GP	04E.A110GH	€ 4.292,00	+ € 3.880,00
F 2500 HDT	236.667	14.200	8.359	DN 200	04G.A142.QG	04G.A142.PG	04G.A142.HG	€ 24.748,00	04E.A142GQ	04E.A142GP	04E.A142GH	€ 5.865,00	+ € 4.102,00
F 3300 HDT	331.667	19.900	11.714	DN 250	04G.A199.QG	04G.A199.PG	04G.A199.HG	€ 30.015,00	04E.A199GQ	04E.A199GP	04E.A199GH	€ 7.840,00	+ € 5.674,00
F 5170 HDT	516.667	31.000	18.249	DN 300	04G.A310.QG	04G.A310.PG	04G.A310.HG	€ 39.531,00	04E.A310GQ	04E.A310GP	04E.A310GH	€ 10.445,00	+ € 8.586,00

Model	Max pressure (bar)
AF HT 30 - F 5170 HDT	12

Model	Air flow	Fittings	Price	Complete filter	Filter element	QF	PF
EN Model	Air flow	Fittings	Price	Complete filter including element and manual drain	Filter element only	1µ filter	1µ - 0,6mg/m³ filter
IT Modello	Portata	Connessioni	Prezzo	Filtro completo di cartuccia e scaricatore manuale	Solo cartuccia filtrante	Filtro 1µ	Filtro 1µ - 0,6mg/m³

HF	Max pressure	IMPORTANT NOTICE - AVVISO IMPORTANTE
EN 0,01µ - 0,01mg/m³ Filter	Max pressure	Manual drain (ball valve) is included in standard filters, however, the installation of an automatic drain is recommended for coalescing filters (PF and HF)
IT Filtro 0,01µ - 0,01mg/m³	Pressione massima	Lo scarico manuale (valvola a sfera) è incluso nei filtri standard, tuttavia si raccomanda l'installazione di uno scaricatore automatico per i filtri a coalescenza (PF e HF)

Accessories / Accessori

Differential pressure gauge		
AF HT 30 - AF HT 2700 - Manometer only	045.F625.00.0000	€ 85,00
AF HT 30 - AF HT 2700 - Complete kit	045.F626.00.0000	€ 422,00
F 0470 HDT - F 5170 HDT	045.F623.00.0000	€ 466,00

Differential pressure gauge	Manometer only	Complete kit
EN Differential pressure gauge	Manometer only	Complete kit
IT Manometro differenziale	Solo manometro	Kit completo



Sterile filters - SF_BS Series

Sterile filters / *Filtri sterili*

Model	Air flow			Fittings	Complete filter		Filter element	
	l/min	m ³ /h	CFM	BSP	Code	Price	Code	Price
SF 0042 BS	700	42	25	½"	04S.0042DS	€ 1.262,00	04E.0042.S	€ 168,00
SF 0105 BS	1.750	105	62	½"	04S.0105DS	€ 1.378,00	04E.0105.S	€ 200,00
SF 0150 BS	2.500	150	88	½"	04S.0150DS	€ 1.451,00	04E.0150.S	€ 221,00
SF 0270 BS	4.500	270	159	1"	04S.0270DS	€ 1.819,00	04E.0270.S	€ 294,00
SF 0360 BS	6.000	360	212	1"	04S.0360DS	€ 2.209,00	04E.0360.S	€ 390,00
SF 0720 BS	12.000	720	424	1½"	04S.0720DS	€ 2.566,00	04E.0720.S	€ 463,00
SF 1080 BS	18.000	1.080	636	2"	04S.1080DS	€ 2.975,00	04E.1080.S	€ 578,00
SF 1440 BS	24.000	1.440	848	2"	04S.1440DS	€ 3.606,00	04E.1440.S	€ 673,00
SF 2160 BS	36.000	2.160	1.271	3"	04S.2160DS	€ 4.027,00	04E.2160.S	€ 872,00
SF 2880 BS	48.000	2.880	1.695	3"	04S.2880DS	€ 4.606,00	04E.2880.S	€ 978,00

Model	Max pressure (bar)
SF 0042 BS - SF 1440 BS	16
SF 2160 BS - SF 2880 BS	11



	Model	Air flow	Fittings	Price	Complete filter	Filter element	Code	Price	Max pressure
EN	Model	Air flow	Fittings	Price	Complete filter	Filter element only	Code	Price	Max pressure
IT	Modello	Portata	Conessioni	Prezzo	Filtro completo	Solo cartuccia filtrante	Codice	Prezzo	Pressione massima

Activated carbon towers - ACT Series

Activated carbon towers / *Colonne a carboni attivi*

Model	Air flow			Fittings	Code	Price	Replacement kit		Price
	l/min	m ³ /h	CFM	BSP			Replacement kit	Price	
ACT 30	500	30	18	3/8"	04T.0030.G.0	€ 1.012,00	Kit ACT 30	04T.K003.00	€ 212,00
ACT 75	1.250	75	44	¾"	04T.0075.G.0	€ 1.977,00	Kit ACT 75	04T.K007.00	€ 402,00
ACT 110	1.833	110	65	¾"	04T.0110.G.0	€ 2.102,00	Kit ACT 110	04T.K011.00	€ 402,00
ACT 150	2.500	150	88	1"	04T.0150.G.0	€ 2.292,00	Kit ACT 150	04T.K015.00	€ 562,00
ACT 180	3.000	180	106	1"	04T.0180.G.0	€ 2.453,00	Kit ACT 180	04T.K018.00	€ 564,00
ACT 350	5.833	350	206	1" ½	04T.0350.G.0	€ 3.835,00	Kit ACT 350	04T.K035.00	€ 914,00
ACT 600	10.000	600	353	2"	04T.0600.G.0	€ 7.019,00	Kit ACT 600	04T.K060.00	€ 1.405,00
ACT 1000	16.667	1.000	589	2"	04T.1000.G.0	€ 8.355,00	Kit ACT 1000	04T.K100.00	€ 2.195,00
ACT 1560	26.000	1.560	918	3"	04T.1560.G.0	€ 11.340,00	Kit ACT 1560	04T.K156.00	€ 3.333,00
ACT 2300	38.333	2.300	1.354	3"	04T.2300.G.0	€ 14.824,00	Kit ACT 2300	04T.K230.00	€ 4.912,00
ACT 2800	46.667	2.800	1.648	DN100 PN40	04T.2800.G.0	€ 18.543,00	Kit ACT 2800	04T.K280.00	€ 5.891,00
ACT 5700	95.000	5.700	3.355	DN100 PN40	04T.5700.G.0	€ 29.866,00	Kit ACT 5700	04T.K570.00	€ 11.937,00

Model	Max pressure (bar)
ACT 30 - 2300	15
ACT 2800 - 5700	13

	Model	Air flow	Fittings	Code	Price	Replacement kit
EN	Model	Air flow	Fittings	Code	Price	Replacement kit
IT	Modello	Portata	Conessioni	Codice	Prezzo	Kit di ricambio



Water/oil separators - Ecoplus Series

Water/oil separators / Separatori acqua/olio

Model	Air flow			Fittings		Code	Price	Replacement kit		Price
	l/min	m ³ /h	CFM	IN	OUT					
ECOPLUS 20	2.000	120	71	½"	½"	05D.0020.00	€ 210,00	KPLUS 20	05D.K020.00	€ 120,00
ECOPLUS 20 PG	2.000	120	71	½"	½"	05E.0020.00	€ 210,00	KPLUSG 20	05E.K020.00	€ 120,00
ECOPLUS 45	4.500	270	159	½"	½"	05D.0045.00	€ 788,00	KPLUS 45	05D.K045.00	€ 316,00
ECOPLUS 45 PG	4.500	270	159	½"	½"	05E.0045.00	€ 788,00	KPLUSG 45	05E.K045.00	€ 316,00
ECOPLUS 100	10.000	600	353	½"	1"	05D.0100.00	€ 1.262,00	KPLUS 100	05D.K100.00	€ 505,00
ECOPLUS 100 PG	10.000	600	353	½"	1"	05E.0100.00	€ 1.262,00	KPLUSG 100	05E.K100.00	€ 505,00
ECOPLUS 200	20.000	1.200	706	½"	1"	05D.0200.00	€ 1.725,00	KPLUS 200	05D.K200.00	€ 715,00
ECOPLUS 200 PG	20.000	1.200	706	½"	1"	05E.0200.00	€ 1.725,00	KPLUSG 200	05E.K200.00	€ 715,00
ECOPLUS 300	30.000	1.800	1.059	½"	1"	05D.0300.00	€ 2.197,00	KPLUS 300	05D.K300.00	€ 880,00
ECOPLUS 300 PG	30.000	1.800	1.059	½"	1"	05E.0300.00	€ 2.197,00	KPLUSG 300	05E.K300.00	€ 880,00
ECOPLUS 600	60.000	3.600	2.119	½"	1"	05D.0601.00	€ 3.322,00	KPLUS 600	05D.K601.00	€ 1.330,00
ECOPLUS 600 PG	60.000	3.600	2.119	½"	1"	05E.0601.00	€ 3.322,00	KPLUSG 600	05E.K601.00	€ 1.330,00



Accessory	Code	Price
ECOPLUS 45 / ECOPLUS 45 PG Wall mounting bracket	05E.B045.00	€ 111,00
3 way adapter (connect 3 units)	05E.A001.00	€ 120,00
Condensate test kit	05E.A002.00	€ 48,00
Multi-inlet adapter 3 x G ½"	05E.A003.00	€ 48,00

Special option	Code	Price
ECOPLUS 20 Without wall mounting bracket	05D.0020B00	€ 203,00
ECOPLUS 20 PG Without wall mounting bracket	05E.0020B00	€ 203,00

	Model	Air flow	Fittings	IN	OUT	Code	Price	Replacement kit
EN	Model	Air flow	Fittings (BSP)	Air inlet	Water outlet	Code	Price	Replacement kit
IT	Modello	Portata	Connessioni (BSP)	Ingresso aria	Uscita acqua	Codice	Prezzo	Kit ricambio

	Accessory	Wall mounting bracket	3 way adapter (connect 3 units)	Condensate test kit
EN	Accessory	Wall mounting bracket	3 way adapter (connect 3 units)	Condensate test kit
IT	Accessorio	Staffa per il montaggio a muro	Adattatore a 3 vie (per connettere 3 unità)	Kit per il test della condensa

	Multi-inlet adapter 3 x G ½"	Special option	Without wall mounting bracket
EN	Multi-inlet adapter 3 x G ½"	Special option	Without wall mounting bracket
IT	Adattatore multi ingresso 3 x G ½"	Versione speciale	Senza staffe per il montaggio a muro

Condensate drains / SC-TIMED Series

Timed condensate drain / Scaricatore di condensa temporizzato

Model		3/8" GAS	1/2" GAS	Price
SC-TIMED	230V	045.DT10.G.21	045.DT10.G.31	€ 117,00
	115V	045.DT10.G.22	045.DT10.G.32	€ 117,00
SC-TIMED COMBO	230V	-	045.DT10.G.11	€ 157,00
	115V	-	045.DT10.G.12	€ 157,00

Model		1/4" GAS	Price
SC-TIMED HP	230V	045.DT10.G.41	€ 209,00
	115V	045.DT10.G.42	€ 209,00



Model	Max pressure (bar)
SC-TIMED / SC-TIMED COMBO	16
SC-TIMED HP	80

Model	#" GAS	230V / 115V	Price	Max pressure
EN Model	BSP connection size	Power supply	Price	Max pressure
IT Modello	Dimensione connessione BSP	Alimentazione	Prezzo	Pressione massima

Condensate drains / Zero Series

No loss condensate drain / Scaricatore di condensa No loss

Model	Compressor capacity	Dryer capacity	Filter capacity	Power supply		Price
	m³/h	m³/h	m³/h	230V	115V	
ZERO 6	600	1200	6000	045.D100.G.11	045.D100.G.12	€ 240,00
ZERO 6A	600	1200	6000	045.D100.G.21	045.D100.G.22	€ 265,00
ZERO 60A	6000	12000	60000	045.D100.G.31	045.D100.G.32	€ 467,00
ZERO 60A HP	6000	12000	60000	045.D100.G.41	045.D100.G.42	€ 1.076,00



Model	Max pressure (bar)
ZERO 6 / 6A / 60A	16
ZERO 60A HP	50

Model	Compressor capacity	Dryer capacity	Filter capacity	Power supply	Price	Max pressure
EN Model	Compressor air flow	Dryer air flow	Filter air flow	Power supply	Price	Max pressure
IT Modello	Portata compressore	Portata essiccatore	Portata filtro	Alimentazione	Prezzo	Pressione massima

Condensate drains / SC-M Series

Floating condensate drain / Scaricatore di condensa a galleggiante

Model	GAS		NPT	
	Code	Price	Code	Price
SC-12M 1/2"	045.D120.G.M0.0	€ 135,00	045.D120.N.M0.0	€ 138,00
SC-34M 3/4"	045.D340.G.M0.0	€ 135,00	045.D340.N.M0.0	€ 138,00
SC-12M-C 1/2"	045.D120.G.M0.C	€ 241,00	N/A	-

Model	Max pressure bar
SC-12M 1/2" - SC-34M 3/4"	16
SC-12M-C 1/2"	16



Model	Code	Price	Max pressure	SC-12M-C
EN Model	Code	Price	Max pressure	Special model for high temperature filters
IT Modello	Codice	Prezzo	Pressione massima	Modello speciale per filtri ad alta temperatura

Condensate drains / SC-MFD Series

Magnetically operated drain / Scaricatore ad azionamento magnetico

Model	Compressor capacity	Dryer capacity	Filter capacity	Code	Price
	m³/h	m³/h	m³/h		
SC-MFD 6	600	1200	6000	045.DM06.G.M0	€ 200,00
SC-MFD 60	6000	12000	60000	045.DM60.G.M0	€ 316,00
SC-MFD 300	30000	60000	100000	045.DM30.G.M0	€ 499,00

Model	Compressor capacity
EN Model	Compressor air flow
IT Modello	Portata compressore

Model	Dryer capacity	Filter capacity	Code	Price	Max pressure 16 bar
EN Model	Dryer air flow	Filter air flow	Code	Price	Max pressure 16 bar
IT Modello	Portata essiccatore	Portata filtro	Codice	Prezzo	Pressione massima 16 bar



Condensate drains / Accessories

Condensate drain accessories / Accessori per scaricatori di condensa

Model / Modello	Accessory / Accessorio	Applicable on / Compatibile con	Code / Codice	Price / Prezzo
SC-TIMED	Service kit valve / Service kit valvola SC-TIMED - SC-TIMED COMBO	SC-TIMED - SC-TIMED COMBO	045.0289.01.0000	€ 46,00
	Service kit valve / Service kit valvola SC-TIMED-HP	SC-TIMED-HP	045.0289.02.0000	€ 53,00
	Service kit timer / Service kit timer SC-TIMED - COMBO - HP	All / Tutti	045.0289.03.0000	€ 64,00
	Wall mounting bracket / Staffa per montaggio a parete SC-TIMED - SC-TIMED-HP	SC-TIMED - SC-TIMED-HP	045.0289.04.0000	€ 24,00
ZERO	Service kit / Service kit ZERO6	ZERO6	045.0287.01.0000	€ 46,00
	Service kit / Service kit ZERO60A	ZERO60A	045.0287.02.0000	€ 53,00
	Service kit / Service kit ZERO60A HP	ZERO60A-HP	045.0287.03.0000	€ 156,00
	Drain heater T-adapter / Adattatore T per riscaldatore di scarico	All / Tutti	045.0288.05.0000	€ 46,00
	Drain heater 230V / Riscaldatore di scarico 230V	All / Tutti	045.0287.05.0000	€ 665,00
	Drain heater 115V / Riscaldatore di scarico 115V	All / Tutti	045.0287.06.0000	€ 665,00
	Wall mounting bracket / Staffa per montaggio a parete	ZERO60A	045.0288.08.0000	€ 53,00
SC-MFD	Service kit / Service kit SC-MFD 6	SC-MFD 6	045.0288.01.0000	€ 64,00
	Service kit / Service kit SC-MFD 60	SC-MFD 60	045.0288.02.0000	€ 147,00
	Service kit / Service kit SC-MFD 300	SC-MFD 300	045.0288.03.0000	€ 209,00
	Anti-airlock adapter / Adattatore anti-ritorno di flusso	SC-MFD 6	045.0288.04.0000	€ 34,00
	Drain heater T-adapter / Adattatore T per riscaldatore di scarico	All / Tutti	045.0288.05.0000	€ 46,00
	Drain heater 230V / Riscaldatore di scarico 230V	All / Tutti	045.0287.05.0000	€ 665,00
	Drain heater 115V / Riscaldatore di scarico 115V	All / Tutti	045.0287.06.0000	€ 665,00
	Wall mounting bracket / Staffa per montaggio a parete SC-MFD 60 - 300	SC-MFD 60 - SC-MFD 300	045.0288.08.0000	€ 53,00
	Ball valve strainer / Filtro valvola a sfera	SC-MFD 60 - SC-MFD 300	045.0288.09.0000	€ 46,00

Energy savers / ESV Series

Compressed air energy savers / Energy saver per aria compressa

Model	Code	Price
ESV 1"	045.E100.G.11	€ 339,00
ESV 2"	045.E100.G.21	€ 877,00
ESV DIGITAL 1"	230V 045.E100.G.31	€ 467,00
	115V 045.E100.G.32	€ 467,00
ESV DIGITAL 2"	230V 045.E100.G.41	€ 998,00
	115V 045.E100.G.42	€ 998,00

	Model	Code	Price
EN	Model	Code	Price
IT	Modello	Codice	Prezzo

	Max pressure 16 bar	230V / 115V
EN	Max pressure 16 bar	Power supply
IT	Pressione massima 16 bar	Alimentazione



Bypass

Bypass / Bypass

Model	Airflow			Code	Price
	l/min.	m ³ /h	CFM		
BP12S ½"	900 ÷ 1200	54 ÷ 72	32 ÷ 42	063.A100.2	€ 274,00
BP34S ¾"	1800 ÷ 3000	108 ÷ 180	64 ÷ 106	063.A100.1	€ 260,00

	Model	Air flow	Code	Price
EN	Model	Air flow	Code	Price
IT	Modello	Portata	Codice	Prezzo



Easy Pipe Line

Easy pipe line / Linea trasporto aria

EN: Aluminum pipe – Length: 5m, price per meter		
IT: Tubo alluminio – Lunghezza: 5m, prezzo al metro		
09A.PIP5.020	Ø 20mm	€ 9,40
09A.PIP5.025	Ø 25mm	€ 12,10
09A.PIP5.032	Ø 32mm	€ 17,40
09A.PIP5.040	Ø 40mm	€ 21,70
09A.PIP5.063	Ø 63mm	€ 38,30
09A.PIP5.080	Ø 80mm	€ 39,80
09A.PIP5.110	Ø 110mm	€ 58,80
09A.PIP5.160	Ø 158mm	€ 116,30



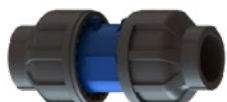
EN: "S" Double bend		
IT: Curva ad "S"		
09A.PIP5.020	Ø 20mm	€ 14,80
09A.PIP5.025	Ø 25mm	€ 19,60



EN: Socket		
IT: Manicotto		
09P.COND.020	Ø 20mm	€ 11,10
09P.COND.025	Ø 25mm	€ 14,00
09P.COND.032	Ø 32mm	€ 20,20
09P.COND.040	Ø 40mm	€ 26,20
09P.COND.063	Ø 63mm	€ 80,80
09P.COND.080	Ø 80mm	€ 156,00
09P.COND.110	Ø 110mm	€ 201,30
09P.COND.160	Ø 158mm	€ 342,60



EN: Union socket		
IT: Manicotto di passaggio		
09P.CONC.020	Ø 20mm	€ 12,00
09P.CONC.025	Ø 25mm	€ 14,70
09P.CONC.032	Ø 32mm	€ 21,30
09P.CONC.040	Ø 40mm	€ 28,70
09P.CONC.063	Ø 63mm	€ 80,50



EN: Reducing socket			
IT: Manicotto riduzione			
09P.REDD.025.020	Ø 25mm	Ø 20mm	€ 21,30
09P.REDD.032.025	Ø 32mm	Ø 25mm	€ 32,20
09P.REDD.040.032	Ø 40mm	Ø 32mm	€ 35,80
09P.REDD.063.040	Ø 63mm	Ø 40mm	€ 53,70
09P.REDD.080.040	Ø 80mm	Ø 40mm	€ 203,40
09P.REDD.080.063	Ø 80mm	Ø 63mm	€ 206,60
09P.REDD.110.040	Ø 110mm	Ø 40mm	€ 241,40
09P.REDD.110.063	Ø 110mm	Ø 63mm	€ 244,10
09P.REDD.110.080	Ø 110mm	Ø 80mm	€ 211,00
09P.REDD.160.110	Ø 158mm	Ø 110mm	€ 446,90



EN: Male socket			
IT: Raccordo maschio			
09P.CONM.020.G04	Ø 20mm	½"	€ 8,60
09P.CONM.020.G05	Ø 20mm	¾"	€ 8,60
09P.CONM.025.G04	Ø 25mm	½"	€ 12,00
09P.CONM.025.G05	Ø 25mm	¾"	€ 12,00
09P.CONM.025.G06	Ø 25mm	1"	€ 12,00
09P.CONM.032.G06	Ø 32mm	1"	€ 14,00
09P.CONM.032.G07	Ø 32mm	1¼"	€ 14,00
09P.CONM.040.G06	Ø 40mm	1"	€ 16,80
09P.CONM.040.G07	Ø 40mm	1¼"	€ 16,80
09P.CONM.040.G08	Ø 40mm	1½"	€ 19,80
09P.CONM.063.G08	Ø 63mm	1½"	€ 43,90
09P.CONM.063.G10	Ø 63mm	2"	€ 44,30



EN: Male socket - Aluminum			
IT: Raccordo maschio - Alluminio			
09B.CONM.020.G04	Ø 20mm	½"	€ 48,70
09B.CONM.025.G05	Ø 25mm	¾"	€ 60,40
09B.CONM.032.G06	Ø 32mm	1"	€ 83,90
09B.CONM.040.G07	Ø 40mm	1¼"	€ 110,70
09B.CONM.063.G10	Ø 63mm	2"	€ 176,90
09B.CONM.080.G12	Ø 80mm	3"	€ 185,00
09B.CONM.110.G12	Ø 110mm	3"	€ 225,30
09B.CONM.160.G12	Ø 158mm	3"	€ 368,90



EN: Female socket			
IT: Raccordo femmina			
09B.CONF.020.G04	Ø 20mm	½"	€ 48,70
09B.CONF.025.G05	Ø 25mm	¾"	€ 60,40
09B.CONF.032.G06	Ø 32mm	1"	€ 83,90
09B.CONF.040.G07	Ø 40mm	1¼"	€ 110,70
09B.CONF.063.G10	Ø 63mm	2"	€ 176,90



Easy Pipe Line

Easy pipe line / Linea trasporto aria

EN: 90° Elbow			
IT: Gomito 90°			
09P.ELBD.020	Ø 20mm		€ 13,30
09P.ELBD.025	Ø 25mm		€ 16,50
09P.ELBD.032	Ø 32mm		€ 23,30
09P.ELBD.040	Ø 40mm		€ 29,90
09P.ELBD.063	Ø 63mm		€ 85,00
09P.ELBD.080	Ø 80mm		€ 215,10
09P.ELBD.110	Ø 110mm		€ 280,00
09P.ELBD.160	Ø 158mm		€ 825,60



EN: 45° Elbow			
IT: Gomito 45°			
09P.ELBH.020	Ø 20mm		€ 13,30
09P.ELBH.025	Ø 25mm		€ 16,50
09P.ELBH.032	Ø 32mm		€ 23,30
09P.ELBH.040	Ø 40mm		€ 29,90
09P.ELBH.063	Ø 63mm		€ 82,10



EN: 90° Reducing elbow			
IT: Gomito ridotto 90°			
09B.ELBR.080.040	Ø 80mm	Ø 40mm	€ 270,20
09B.ELBR.080.063	Ø 80mm	Ø 63mm	€ 272,80
09B.ELBR.110.040	Ø 110mm	Ø 40mm	€ 321,90
09B.ELBR.110.063	Ø 110mm	Ø 63mm	€ 324,70
09B.ELBR.110.080	Ø 110mm	Ø 80mm	€ 294,20
09B.ELBR.160.110	Ø 158mm	Ø 110mm	€ 933,20



EN: Male thread 90° elbow			
IT: Gomito 90° filettato maschio			
09B.ELBT.080.G12	Ø 80mm	3"	€ 251,30
09B.ELBT.110.G12	Ø 110mm	3"	€ 309,60
09B.ELBT.160.G12	Ø 158mm	3"	€ 847,00



EN: Wall bearing elbow with female threaded brass			
IT: Gomito a muro filettato femmina ottone			
09B.ELBF.G04.G04	½"	½"	€ 22,00



EN: Wall bearing elbow with male / female threaded brass			
IT: Gomito a muro filettato maschio / femmina ottone			
09B.ELBM.G04.G04	½"	½"	€ 10,00
09B.ELBM.G05.G05	¾"	¾"	€ 18,50



EN: Cap		
IT: Calotta		
09P.ENDC.020	Ø 20mm	€ 12,00
09P.ENDC.025	Ø 25mm	€ 14,00
09P.ENDC.032	Ø 32mm	€ 19,80
09P.ENDC.040	Ø 40mm	€ 23,70
09P.ENDC.063	Ø 63mm	€ 43,90
09P.ENDC.080	Ø 80mm	€ 79,40
09P.ENDC.110	Ø 110mm	€ 95,10
09P.ENDC.160	Ø 158mm	€ 150,60



EN: End cap with terminal		
IT: Calotta con terminale		
09P.ENDT.080	Ø 80mm	€ 159,20
09P.ENDT.110	Ø 110mm	€ 198,10
09P.ENDT.160	Ø 158mm	€ 332,00



EN: Pipe-flange fitting adaptor		
IT: Adattatore per connessione tubo-flangia		
09B.FLAN.080	Ø 80mm	€ 226,80
09B.FLAN.110	Ø 110mm	€ 317,00
09B.FLAN.160	Ø 158mm	€ 537,10



EN: Tee		
IT: Tee		
09P.TEET.020	Ø 20mm	€ 17,30
09P.TEET.025	Ø 25mm	€ 22,00
09P.TEET.032	Ø 32mm	€ 27,70
09P.TEET.040	Ø 40mm	€ 37,60
09P.TEET.063	Ø 63mm	€ 123,20
09P.TEET.080	Ø 80mm	€ 313,20
09P.TEET.110	Ø 110mm	€ 402,20
09P.TEET.160	Ø 158mm	€ 1.141,10



EN: Reducing tee			
IT: Tee ridotto			
09P.TEER.025.020	Ø 25mm	Ø 20mm	€ 25,70
09P.TEER.032.025	Ø 32mm	Ø 25mm	€ 26,50
09P.TEER.040.032	Ø 40mm	Ø 32mm	€ 40,40
09P.TEER.063.040	Ø 63mm	Ø 40mm	€ 96,30
09P.TEER.080.040	Ø 80mm	Ø 40mm	€ 358,70
09P.TEER.080.063	Ø 80mm	Ø 63mm	€ 362,10
09P.TEER.110.040	Ø 110mm	Ø 40mm	€ 440,10
09P.TEER.110.063	Ø 110mm	Ø 63mm	€ 442,70
09P.TEER.110.080	Ø 110mm	Ø 80mm	€ 412,70
09P.TEER.160.110	Ø 158mm	Ø 110mm	€ 914,90



Easy Pipe Line

Easy pipe line / Linea trasporto aria

EN: Male thread tee			
IT: Tee filettato maschio			
09P.TEEM.080.G12	3"	Ø 80mm	€ 340,30
09P.TEEM.110.G12	3"	Ø 110mm	€ 421,70
09P.TEEM.160.G12	3"	Ø 158mm	€ 1.163,50



EN: Ball valve		
IT: Valvola a sfera		
09P.VALD.020	Ø 20mm	€ 51,20
09P.VALD.025	Ø 25mm	€ 58,50
09P.VALD.032	Ø 32mm	€ 73,10
09P.VALD.040	Ø 40mm	€ 91,50
09P.VALD.063	Ø 63mm	€ 193,40



EN: Ball valve extra sized body		
IT: Valvola a sfera con corpo maggiorato		
09P.VALL.020	Ø 20mm	€ 58,50
09P.VALL.025	Ø 25mm	€ 69,30
09P.VALL.032	Ø 32mm	€ 83,90
09P.VALL.040	Ø 40mm	€ 105,90



EN: Ball valve threaded ends		
IT: Valvola a sfera filettata		
09P.VALF.G04	½"	€ 31,40
09P.VALF.G05	¾"	€ 36,50
09P.VALF.G06	1"	€ 45,70
09P.VALF.G07	1¼"	€ 64,10
09P.VALF.G10	2"	€ 117,10
09P.VALF.G12	3"	€ 320,50



EN: Butterfly valve		
IT: Valvola a farfalla		
09B.VALB.080	Ø 80mm	€ 167,00
09B.VALB.110	Ø 110mm	€ 219,60
09B.VALB.160	Ø 158mm	€ 402,20



EN: Drop			
IT: Calata			
09P.DERD.025.020	Ø 25mm	Ø 20mm	€ 40,40
09P.DERD.032.020	Ø 32mm	Ø 20mm	€ 42,20
09P.DERD.040.020	Ø 40mm	Ø 20mm	€ 47,70
09P.DERD.040.025	Ø 40mm	Ø 25mm	€ 47,70
09P.DERD.063.020	Ø 63mm	Ø 20mm	€ 64,10
09P.DERD.063.025	Ø 63mm	Ø 25mm	€ 64,10
09P.DERD.063.032	Ø 63mm	Ø 32mm	€ 64,10
09P.DERD.080.020	Ø 80mm	Ø 20mm	€ 89,90
09P.DERD.080.025	Ø 80mm	Ø 25mm	€ 93,00
09P.DERD.080.032	Ø 80mm	Ø 32mm	€ 98,90
09P.DERD.110.020	Ø 110mm	Ø 20mm	€ 103,90
09P.DERD.110.025	Ø 110mm	Ø 25mm	€ 106,80
09P.DERD.110.032	Ø 110mm	Ø 32mm	€ 113,20
09P.DERD.160.020	Ø 158mm	Ø 20mm	€ 161,30
09P.DERD.160.025	Ø 158mm	Ø 25mm	€ 161,00
09P.DERD.160.032	Ø 158mm	Ø 32mm	€ 170,80
09P.DERD.160.040	Ø 158mm	Ø 40mm	€ 178,60
09P.DERD.160.063	Ø 158mm	Ø 63mm	€ 211,20



EN: Female drop			
IT: Calata femmina			
09P.DERF.025.G04	Ø 25mm	½"	€ 45,70
09P.DERF.032.G04	Ø 32mm	½"	€ 47,70
09P.DERF.040.G04	Ø 40mm	½"	€ 53,00
09P.DERF.040.G05	Ø 40mm	¾"	€ 53,00
09P.DERF.063.G04	Ø 63mm	½"	€ 71,40
09P.DERF.063.G05	Ø 63mm	¾"	€ 71,40
09P.DERF.063.G06	Ø 63mm	1"	€ 71,40
09P.DERF.080.G04	Ø 80mm	½"	€ 79,20
09P.DERF.080.G05	Ø 80mm	¾"	€ 81,40
09P.DERF.080.G06	Ø 80mm	1"	€ 83,90
09P.DERF.110.G04	Ø 110mm	½"	€ 93,40
09P.DERF.110.G05	Ø 110mm	¾"	€ 95,10
09P.DERF.110.G06	Ø 110mm	1"	€ 98,20
09P.DERF.160.G04	Ø 158mm	½"	€ 150,40
09P.DERF.160.G05	Ø 158mm	¾"	€ 152,40
09P.DERF.160.G06	Ø 158mm	1"	€ 155,20
09P.DERF.160.G07	Ø 158mm	1¼"	€ 158,10
09P.DERF.160.G10	Ø 158mm	2"	€ 159,60



Easy Pipe Line

Easy pipe line / Linea trasporto aria

EN: Male drop			
IT: Calata maschio			
09P.DERM.025.G04	Ø 25mm	½"	€ 45,70
09P.DERM.032.G04	Ø 32mm	½"	€ 47,70
09P.DERM.040.G04	Ø 40mm	½"	€ 53,00
09P.DERM.040.G05	Ø 40mm	¾"	€ 53,00
09P.DERM.063.G04	Ø 63mm	½"	€ 71,40
09P.DERM.063.G05	Ø 63mm	¾"	€ 71,40
09P.DERM.063.G06	Ø 63mm	1"	€ 71,40



EN: 3 Ports applique - Female			
IT: Applique 3 vie - Femmina			
09P.AP3F.G05.G04	¾"	½"	€ 64,10



EN: 3 Ports applique			
IT: Applique 3 vie			
09P.AP3T.020.G04	Ø 20mm	½"	€ 56,20
09P.AP3T.025.G04	Ø 25mm	½"	€ 56,20



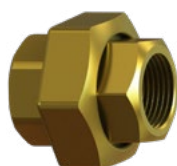
EN: 2 Ports applique			
IT: Applique 2 vie			
09P.AP2T.020.G04	Ø 20mm	½"	€ 55,00
09P.AP2T.025.G04	Ø 25mm	½"	€ 55,00



EN: Plug			
IT: Tappo			
09B.PLUG.G04	½"		€ 3,10



EN: Brass union socket			
IT: Bocchettone femmina ottone			
09B.UNIF.G04	½"		€ 27,70
09B.UNIF.G05	¾"		€ 33,00
09B.UNIF.G06	1"		€ 34,50
09B.UNIF.G07	1¼"		€ 60,40
09B.UNIF.G08	1½"		€ 82,60
09B.UNIF.G10	2"		€ 109,20



EN: Hosepipe, L = Length			
IT: Tubo flessibile, L = Lunghezza			
09P.FLEX.G04	½"	L 1500mm	€ 96,70
09P.FLEX.G05	¾"	L 1500mm	€ 153,60
09P.FLEX.G06	1"	L 1500mm	€ 246,20
09P.FLEX.G07	1¼"	L 2200mm	€ 528,50
09P.FLEX.G10	2"	L 3000mm	€ 1.075,30
09P.FLEX.080.015	Ø 80mm	L 1500mm	AOR
09P.FLEX.080.020	Ø 80mm	L 2000mm	AOR
09P.FLEX.110.020	Ø 110mm	L 2000mm	AOR
09P.FLEX.110.030	Ø 110mm	L 3000mm	AOR
09P.FLEX.160.032	Ø 158mm	L 3200mm	AOR



EN: Spacer		
IT: Distanziale		
09M.SPAC.000	29mm	€ 8,00
09P.SPAC.H03	3mm	€ 3,10
09P.SPAC.H09	9mm	€ 4,10



EN: Plastic bracket		
IT: Fermatubo in plastica		
09P.FEP6.020	Ø 20mm	€ 1,50
09P.FEP6.025	Ø 25mm	€ 1,60
09P.FEP8.032	Ø 32mm	€ 2,70
09P.FEP8.040	Ø 40mm	€ 4,20
09P.FEP8.063	Ø 63mm	€ 6,00



EN: Metal wall bracket with coupler		
IT: Collare fermatubo metallico		
09M.FERF.020	Ø 20mm	€ 8,70
09M.FERF.025	Ø 25mm	€ 8,90
09M.FERF.032	Ø 32mm	€ 9,40
09M.FERF.040	Ø 40mm	€ 10,20
09M.FERF.063	Ø 63mm	€ 13,30
09M.FERF.080	Ø 80mm	€ 6,70
09M.FERF.110	Ø 110mm	€ 9,80
09M.FERF.160	Ø 158mm	€ 15,30



EN: Clamp for fastening to structural shape		
IT: Morsetto per montaggio a bordo profilo		
09M.HOLD.M06	Ø M6	€ 16,50
09M.HOLD.M08	Ø M8	€ 14,10
09M.HOLD.M10	Ø M10	€ 14,70
09M.HOLD.M08.002	2-3mm x M8	€ 17,30
09M.HOLD.M08.003	3-8mm x M8	€ 18,50
09M.HOLD.M08.008	8-14mm x M8	€ 19,40
09M.HOLD.M08.014	14-20mm x M8	€ 19,80
09M.HOLD.M10.001	1,5-3mm x M10	€ 10,90
09M.HOLD.M10.003	3-8mm x M10	€ 11,30



EN: Pipe stand, L = Length		
IT: Mensola, L = Lunghezza		
09M.SHELF.180	L 180mm	€ 43,90
09M.SHELF.160	L 160mm	€ 31,40
09M.SHELF.210	L 210mm	€ 40,40
09M.SHELF.310	L 310mm	€ 55,00
09M.SHELF.510	L 510mm	€ 65,80



EN: Threaded rod		
IT: Barretta filettata		
09M.RODT.M08.060	M8 x 60mm	€ 1,30
09M.RODT.M08.100	M8 x 100mm	€ 1,30



Easy Pipe Line

Easy pipe line / Linea trasporto aria

EN: Anti whip-last strap		
IT: KIT anti colpo di frusta		
09B.AWLS.000		€ 31,60



EN: Wrench		
IT: Chiave		
09P.WREN.016	Ø 20-32mm	€ 16,30
09P.WREN.040	Ø 40-63mm	€ 25,10



EN: Pipe cutter		
IT: Tagliatubo		
09P.CUTT.020	Ø 20-63mm	€ 659,90
09P.CUTT.080	Ø 80-110mm	€ 933,40
09P.CUTT.160	Ø 158mm	€ 1.146,90



EN: Chamfering cone		
IT: Smussatore		
09P.CHAM.016	Ø 16-50mm	€ 229,60



EN: Pipe milling cutter		
IT: Utensile per foratura tubo		
09M.MILL.025	Ø 25-32mm	€ 139,50
09M.MILL.040	Ø 40-63mm	€ 173,30
09M.MILL.080	Ø 80mm	€ 162,90
09M.MILL.110	Ø 110mm	€ 171,00
09M.MILL.160	Ø 158mm	€ 205,60



EN: Spare part for milling cutter		
IT: Tazza ricambio per utensile foratura		
09M.MISP.025	Ø 20-32mm	€ 89,50
09M.MISP.040	Ø 40-63mm	€ 89,50



EN: Deburring tool		
IT: Utensile di sbavatura		
09P.DBTL.140		€ 42,80



EN: Vaseline grease		
IT: Grasso di vasellina		
09V.VASE.0125	125g	€ 34,50
09V.VASE.0500	500g	€ 82,60
09V.VASE.1000	1Kg	€ 137,00





This price list replaces all previous ones
Il presente listino sostituisce tutti i precedenti

OMI reserves the right to change the data contained in this price list without prior notice
La OMI si riserva il diritto di modificare i dati contenuti in questo listino prezzi senza alcun preavviso



OFFICINE MECCANICHE INDUSTRIALI
Via dell'Artigianato, 34 - 34070 Fogliano Redipuglia (GO) - ITALY
Tel. ++39.0481.488516 - Fax. 0481.489871
www.omi-italy.it e-mail: omi@omi-italy.it



Cod. 747.1997.00.00-26 Rev.01
© Copyright 2026 OMI Srl

